



PERSPECTIVE

TABLE OF CONTENTS

ARCHITECTURAL	A-1 TABLE OF CONTENTS PERSPECTIVE	
	A-2 FLOOR PLAN REFLECTED CEILING PLAN	
	A-3 ROOF PLAN FRONT ELEVATION REAR ELEVATION	
	A-4 RIGHT-SIDE ELEVATION LEFT-SIDE ELEVATION CROSS SECTION LONGITUDINAL SECTION GUTTER DETAILS CEILING DETAILS	LINE # GRADE
	A-5 DET. PLAN OF PWD RAMP PWD RAMP SECTIONS SPOT DETAILS DOORS AND WINDOWS SCHEDULE GRILLES DETAIL	
	A-6 DET. PLAN OF TOILET SECTIONS SPOT DETAILS DET. PLAN OF GROUP HANDWASHING FRONT ELEVATION SECTION SPOT DETAILS	ARCHITECTURAL
	A-7 DET. OF BLACKBOARD PLAN (SECTIONAL VIEW) ELEVATION (FRONT VIEW) SECTION (SIDE VIEW) DETAIL SECTION (CHALK DUST BOX) CHALK DUST BOX DETAIL (ISOMETRIC VIEW)	STRUCTURAL
STRUCTURAL	S-1 GENERAL CONSTRUCTION NOTES	
	S-2 GENERAL CONSTRUCTION NOTES	
	S-3 FOUNDATION PLAN COLUINS FOOTING, IE BEAMS & FOOTING DETAILS	SANITARY
	S-4 ROOF BEAM DETAILS END WALL DETAIL STAR ON FALL RAMP & RC GUTTER DETAILS	
	S-5 ROOF FRAMING PLAN DETAIL ELEVATION OF TRUSS SCHEDULE OF MEMBERS AND WELDS REFERENCE WELD DETAIL	
	S-6 DET. PLAN OF TOILET SECTIONS SPOT DETAILS DET. PLAN OF GROUP HANDWASHING FRONT ELEVATION SECTION SPOT DETAILS	ELECTRICAL
	S-7 TRUSS ANCHORAGE DETAILS PURLINS TO END WALL CONNECTION DETAIL	
	S-8 LAVATORY DETAILS CONCRETE SEATING DETAIL HANDWASH DETAIL WALL FOOTING DETAIL	MECHANICAL
PLUMBING	P-1 FLOOR PLAN (SEWER LINE & DRAINAGE LINE LAYOUT)	
	P-2 ROOF PLAN (DRAINAGE LAYOUT)	
	P-3 ISOMETRIC DIAGRAM/ (SEWER & DRAINAGE LAYOUT) (WATER LINE LAYOUT)	
	P-4 SCHEDULE OF SLAB REINFORCEMENT DETAIL OF CATCH BASIN DETAIL OF SEPTIC VAULT DETAIL OF SEPTIC VAULT (WITH REINFORCING BARS)	
ELECTRICAL	E-1 LIGHTING LAYOUT POWER LAYOUT	
	E-2 GENERAL NOTES ELECTRICAL SYMBOLS ELECTRICAL RISER DIAGRAM SCHEDULE OF LOADS AND COMPUTATIONS SCHEDULE OF LIGHTING FIXTURES AND LAMPS	

REPUBLIC OF THE PHILIPPINES
OFFICE OF THE CITY/MUNICIPAL
ENGINEER/BUILDING OFFICIAL

DISTRICT/CITY/MUNICIPALITY

LAND USE & ZONING

LINE # GRADE

ARCHITECTURAL

STRUCTURAL

SANITARY

ELECTRICAL

MECHANICAL

DRAWN BY :
JUNIELSON P. CULLADO
CAD OPERATOR
EPD-DepEd

ARCHITECT :
JET BAYMOND G. ALABASO
ARCHITECT III
EPD-DepEd

RECOMMENDING APPROVAL :
LUIS PURISIMA, JR.
ASST. CHIEF, EPD-AS
DepEd

RECOMMENDING APPROVAL :
ANNABELLE R. PANGAN
CHIEF
OFFICE OF THE CHIEF, EPD-AS

APPROVED BY :
ALAN DEL B. PASCUA
UNDERSECRETARY FOR ADMINISTRATION

PROJECT TITLE :
**ONE (1) STOREY, TWO (2) CLASSROOM
SCHOOL BUILDING
(WITH COMMON TOILETS @ ONE SIDE)**
LOCATION :

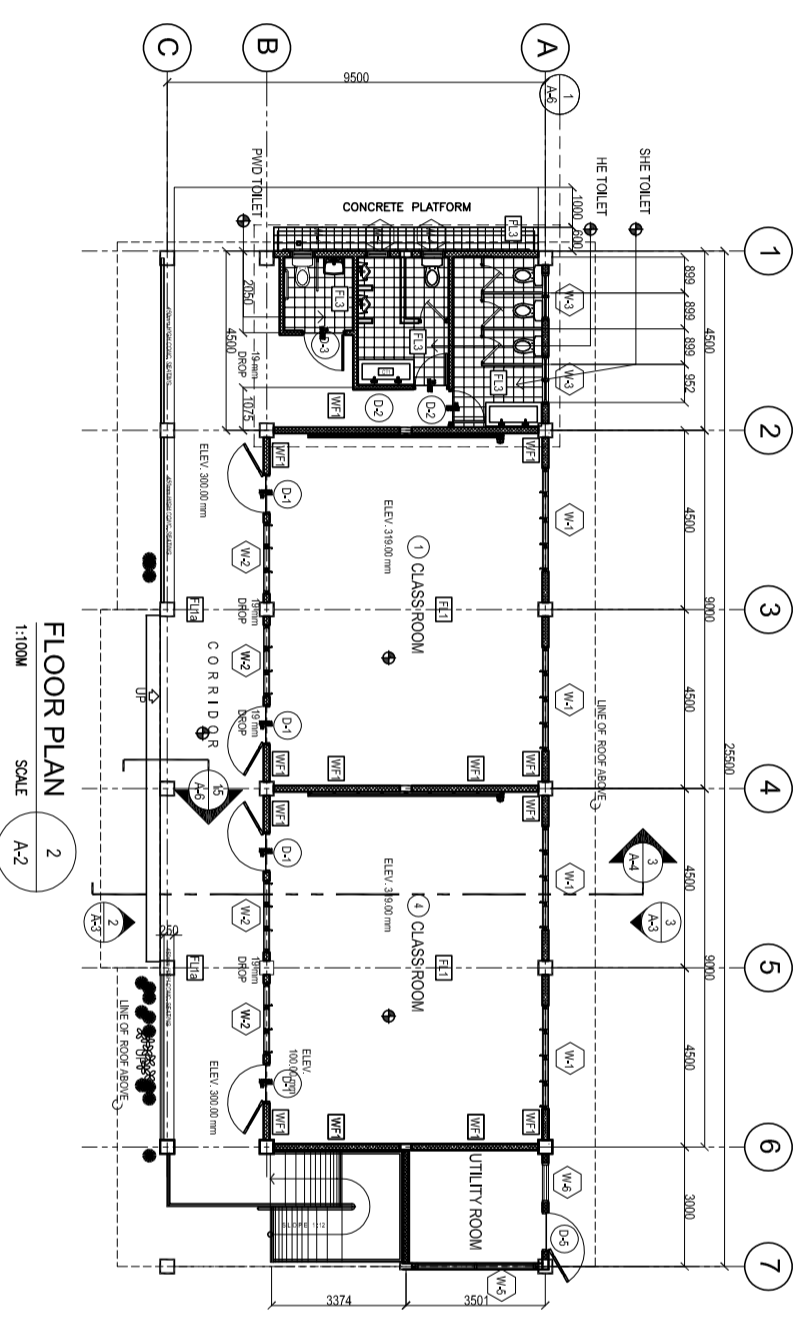
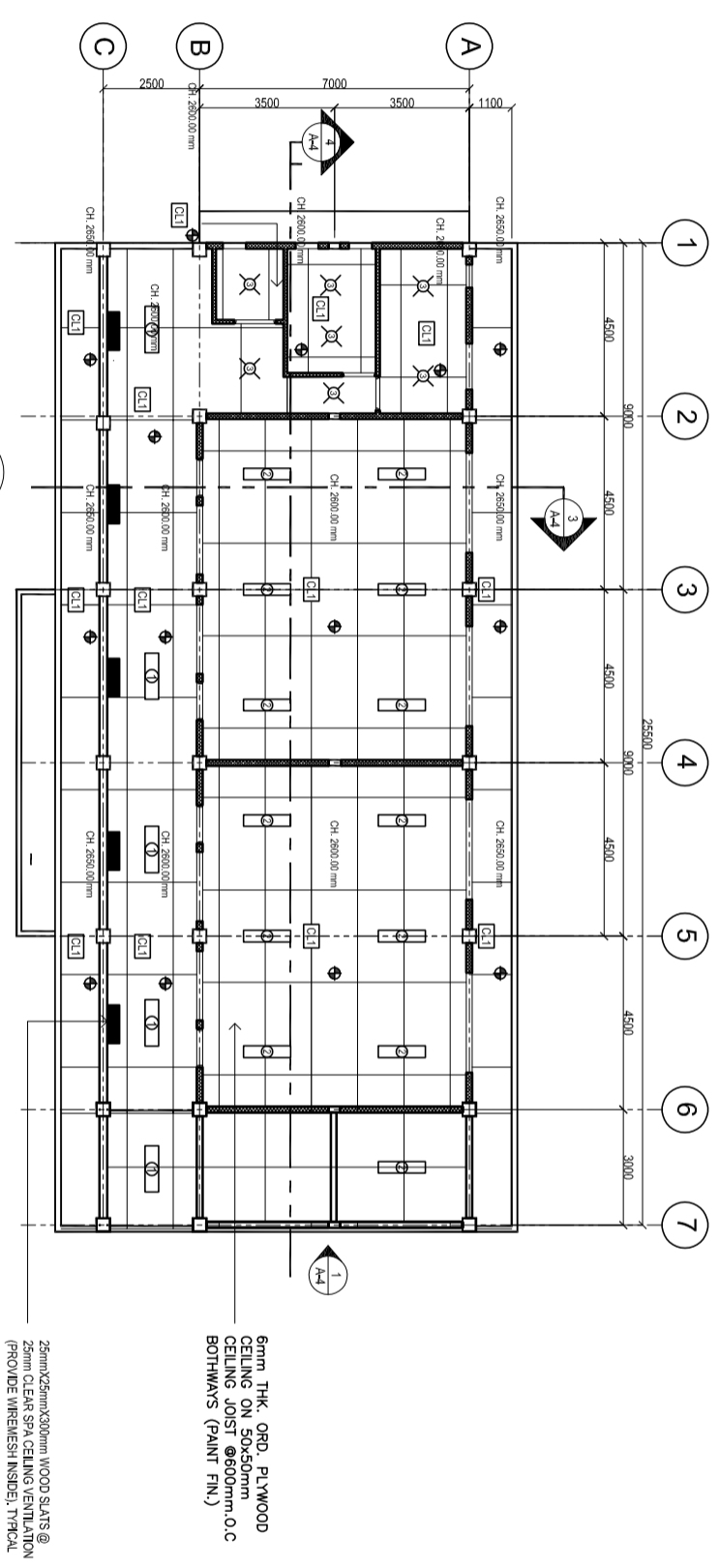
PROJECT CODE :
**DEPARTMENT OF EDUCATION
DepEd**

OWNER :
DEPARTMENT OF EDUCATION
DepEd

SHEET NO. :
A-1
7

SCHEDULE OF FINISHES

FLOOR FINISHES	
FL1	PLAIN CEMENT W/ FLOOR HARDENER, SMOOTH FINISH
FL1a	NON-SKID PLAIN CEMENT FINISH
FL2	NON-SKID PLAIN CEMENT FINISH W/ 12mm GROOVE @ EVERY 100mm O.C.
FL3	300mmX300mm VITRIFIED UNGLAZED FLOOR TILES
WALL FINISHES	
WF1	100mm/150mm THK CHB INTERIOR WALL W/ PLAIN CEMENT PLASTER PAINTED FINISH (SUBMIT COLOR SCHEMES FOR APPROVAL)
CEILING FINISHES	
CL1	6MM THK ORDINARY PLYWOOD CEILING ON 50MM X 50MM CEILING JOIST @ 800MM O.C BOTHWAYS (PAINT FINISH)



DRAWN BY :
 JUNESTON P. GULLADO
 DAD OPERATOR
 EPT-DWED

ARCHITECT :
 JET RAYMOND S. ALABASO
 ARCHITECT III
 EPT-DWED

RECOMMENDING APPROVAL :
 LUIS G. PURISMA, JR.
 ASST. CHIEF, EPT-AS
 DWED

RECOMMENDING APPROVAL :
 ANNALYN B. TRINIDAD
 CHIEF
 OFFICE OF THE CHIEF, EPT-AS

APPROVED BY :
 ALAIN DEL B. PASCUA
 UNDERSECRETARY FOR ADMINISTRATION

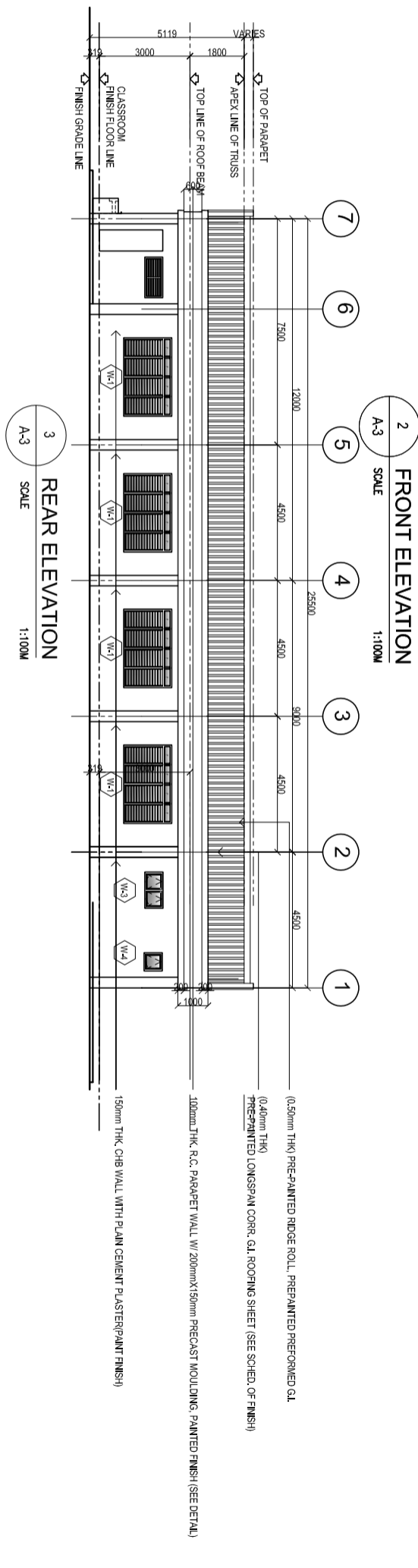
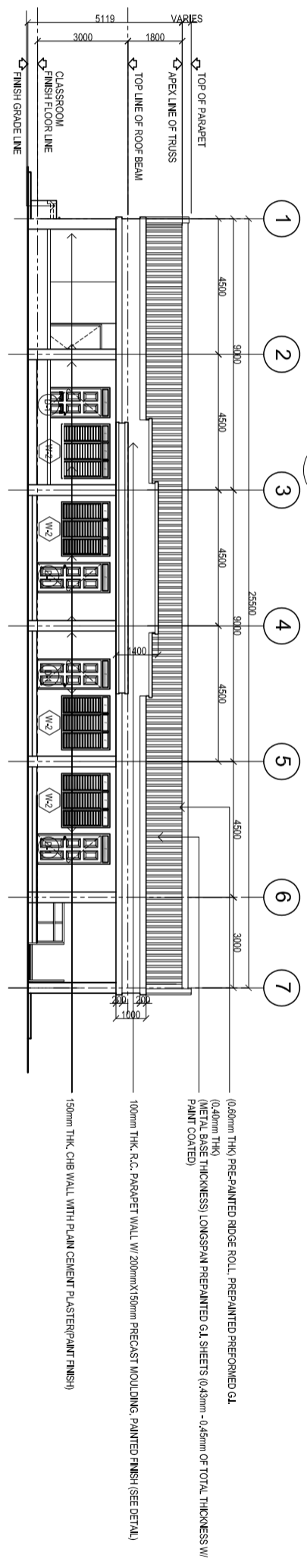
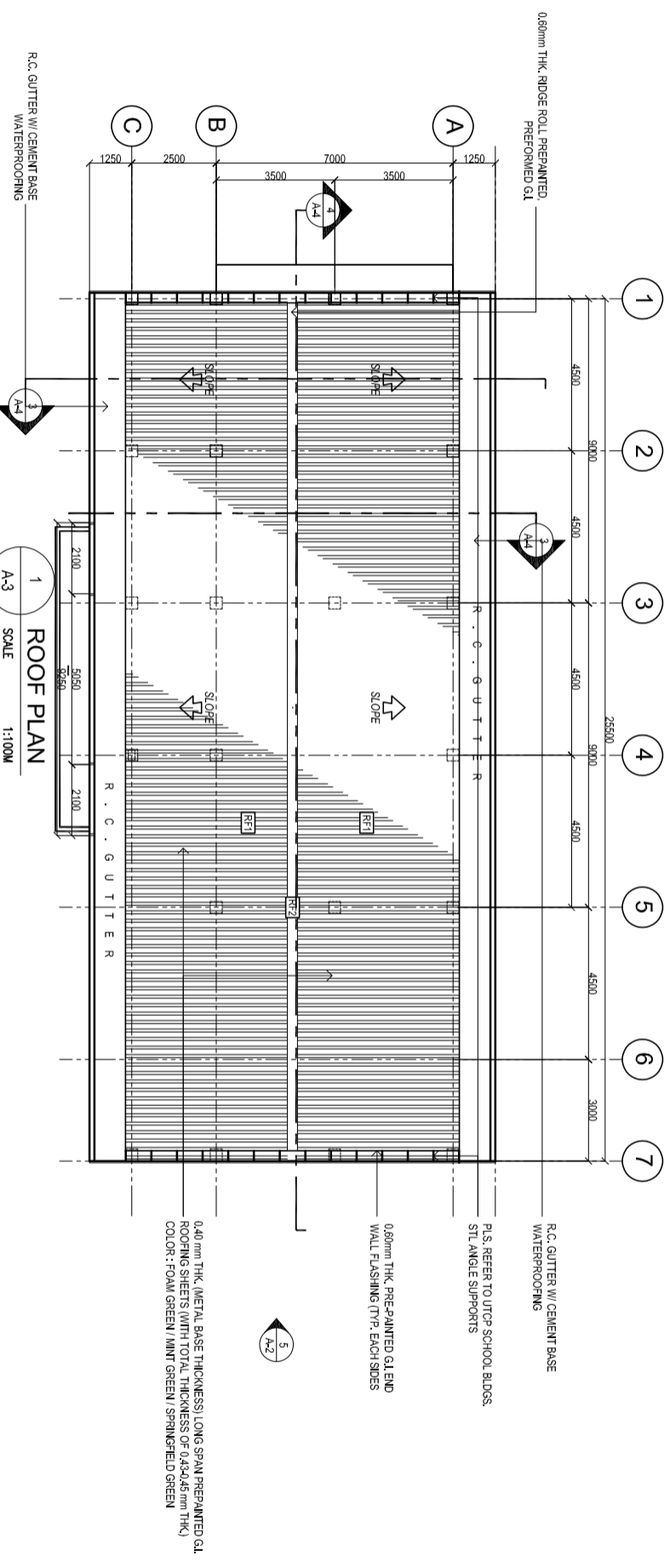
PROJECT TITLE :
MODIFIED STANDARD DEPED ONE (1) STOREY, TWO (2) CLASSROOM SCHOOL BUILDING (WITH COMMON TOILETS @ ONE SIDE)

PROJECT CODE:

OWNER :
DEPARTMENT OF EDUCATION
 DepEd

SHEET NO.:
A-2
 SHEET CONTENTS :
 REFLECTED CEILING PLAN
 FLOOR PLAN

NOTE:
 - PROVIDE 6mm THK. BUBBLE-TYPE FLEXIBLE THERMAL INSULATION W/ 2 SIDED ALUMINUM FOIL FOR SCHOOL BUILDING SITE LOCATED NEAR SEA BOARDS OR COASTAL AREAS PRONE TO CORROSION OF G.I. ROOFING. CORRUGATED ASPHALT ROOFING SHEETS (3.00mm THK BITUMINOUS CELLULOUS FIBRES) CAN BE USED AS ALTERNATE MATERIALS



DRAWN BY :
JUNELSON P. CULLADO
 CDD OPERATOR
 EPD-DepEd

ARCHITECT :
LET RIVERANO & ALABASO
 ARCHITECT III
 EPD-DepEd

RECOMMENDING APPROVAL :
LUIS V. PONSIMA, JR.
 ASST. CHIEF, EPD-AS
 DepEd

RECOMMENDING APPROVAL :
ANNETTE T. PANGAN
 CHIEF
 OFFICE OF THE CHIEF, EPD-AS

APPROVED BY :
ALAIN DEL B. PASCUA
 UNDERSECRETARY FOR ADMINISTRATION

PROJECT TITLE :
MODIFIED STANDARD DEPED ONE (1) STOREY, TWO (2) CLASSROOM SCHOOL BUILDING (WITH COMMON TOILETS @ ONE SIDE)

PROJECT CODE :

OWNER :
DEPARTMENT OF EDUCATION DepEd

SHEET CONTENTS :
 - ROOF PLAN
 - FRONT ELEVATION
 - REAR ELEVATION

SHEET NO. :
A-3
7