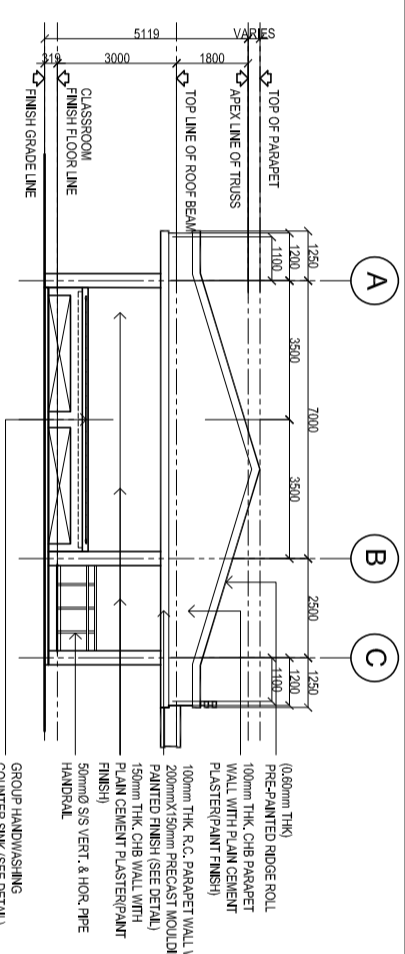
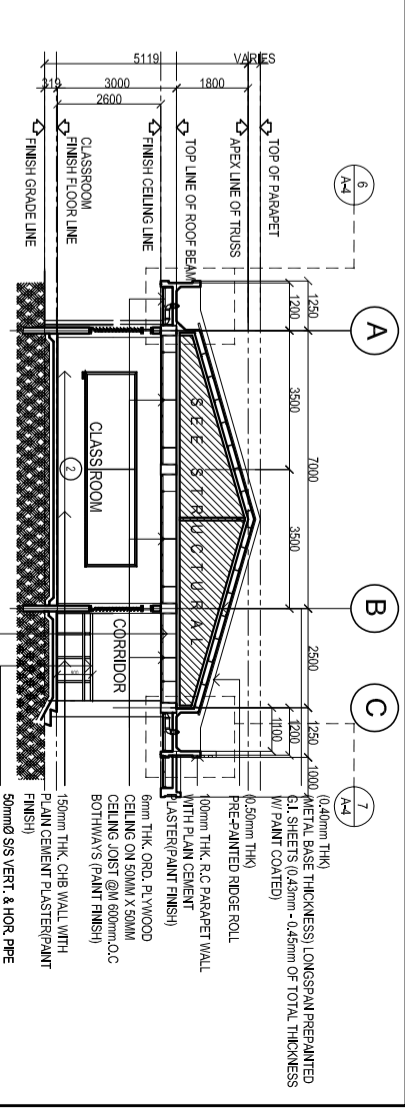


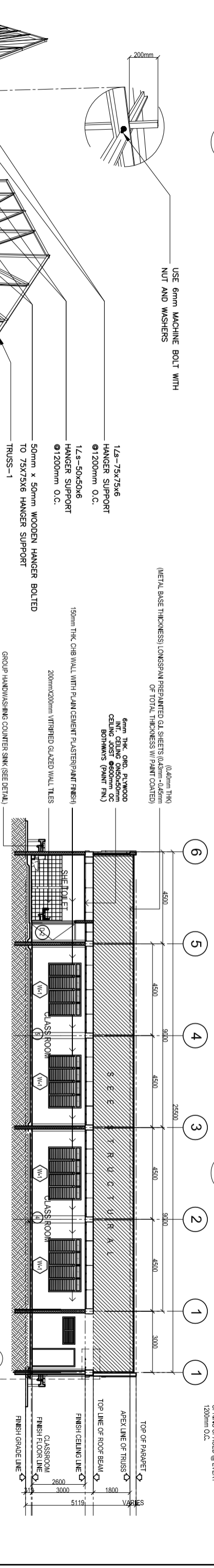
1 RIGHT SIDE ELEVATION
SCALE 1:100M
A-4



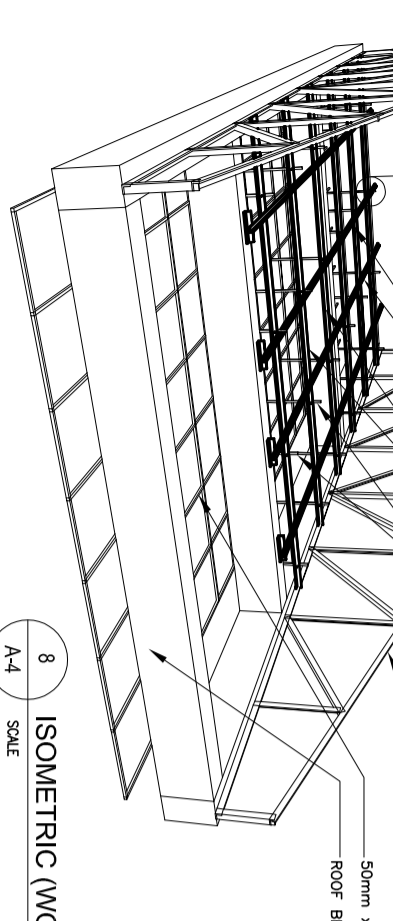
2 LEFT SIDE ELEVATION
SCALE 1:100M
A-4



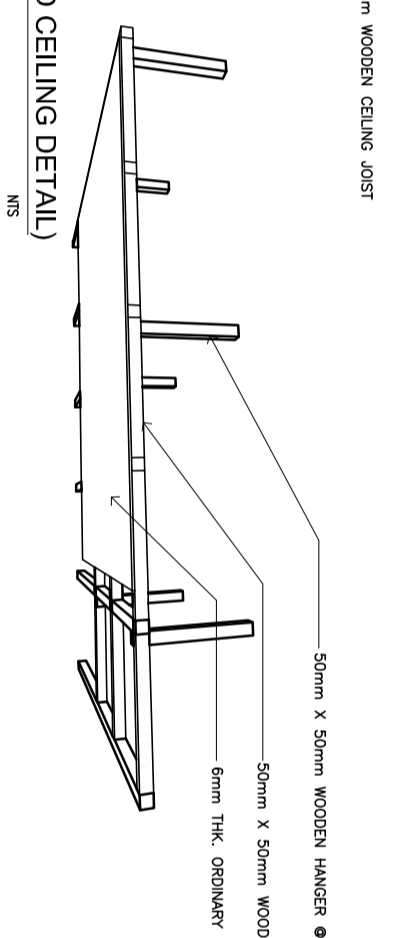
3 CROSS SECTION
SCALE 1:100M
A-4



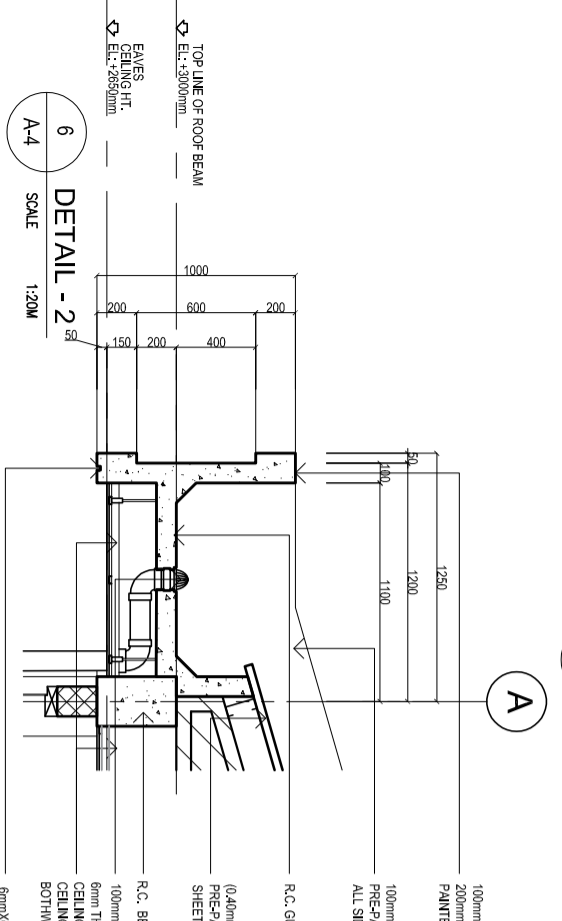
4 LONGITUDINAL SECTION
SCALE 1:100M
A-4



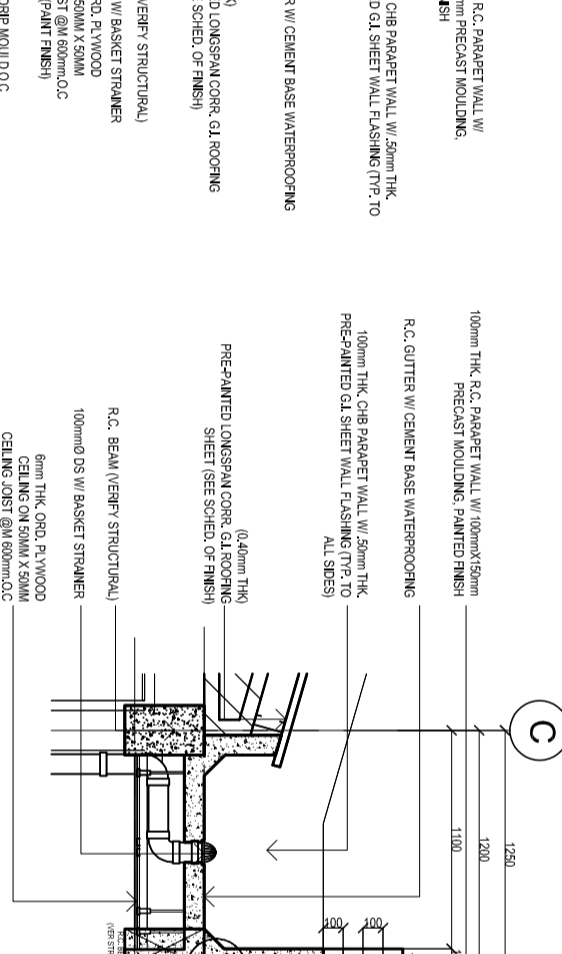
8 ISOMETRIC (WOOD CEILING DETAIL)
SCALE A-4
A



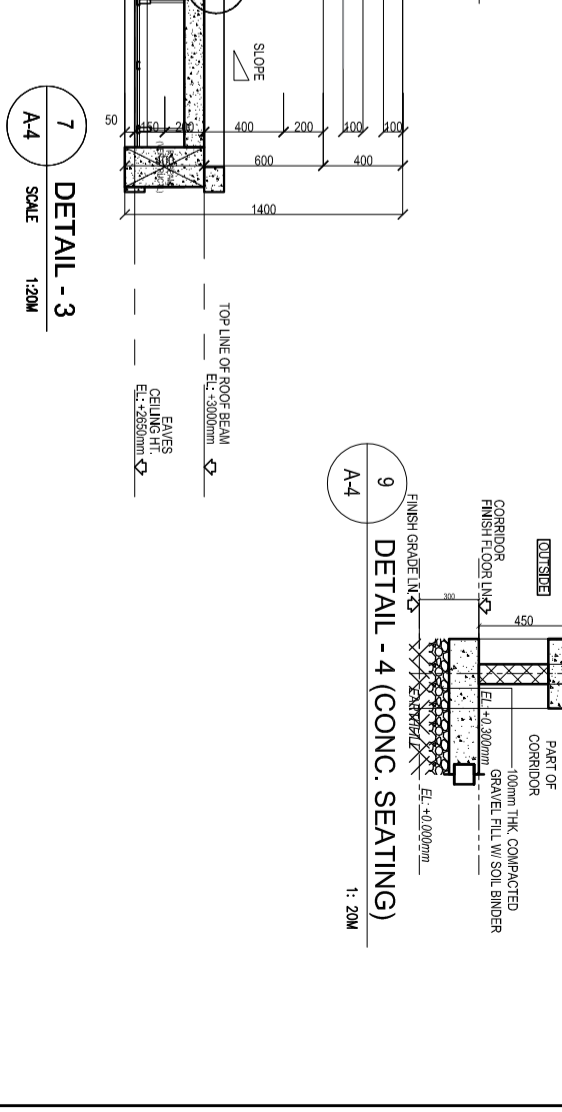
NS



6 DETAIL - 2
SCALE 1:20M
A-4

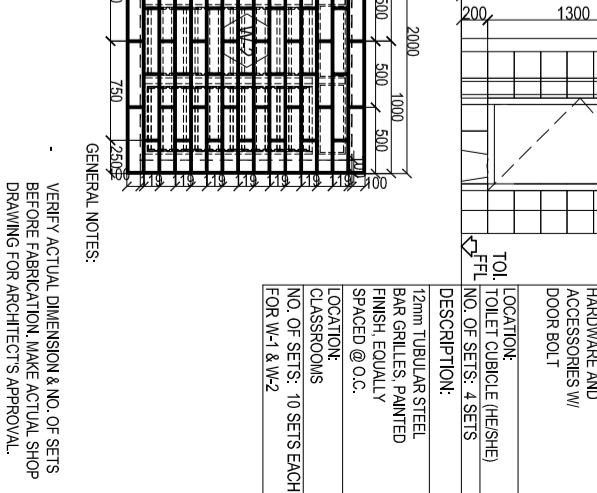
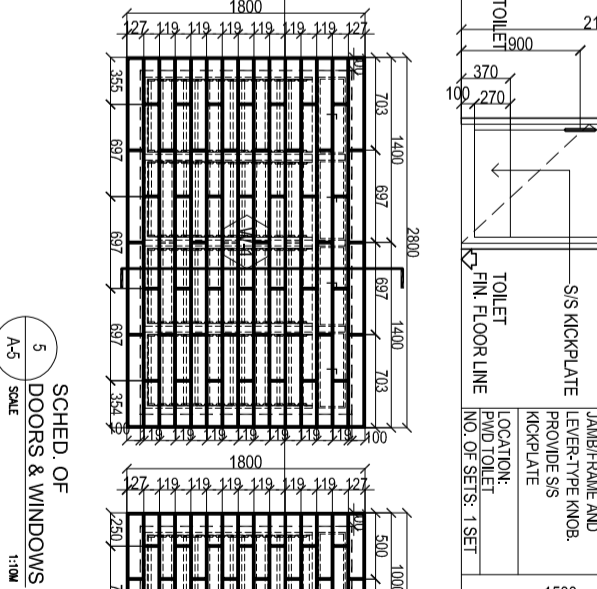
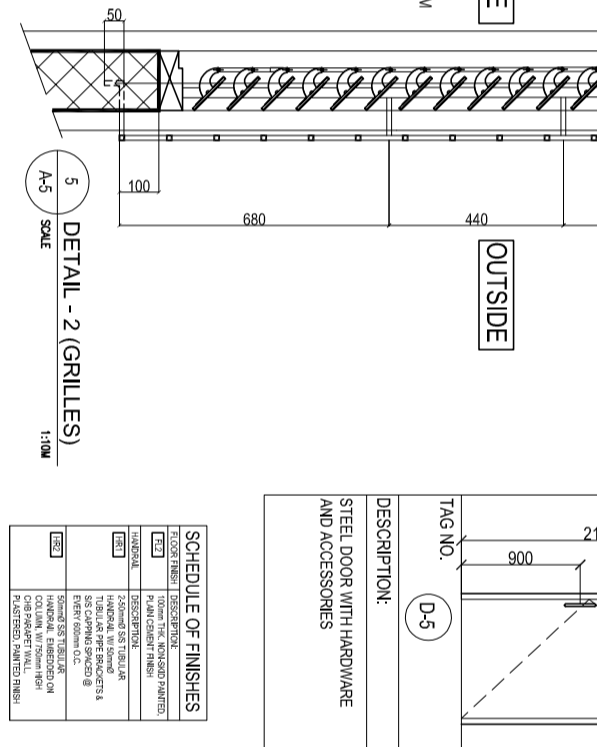
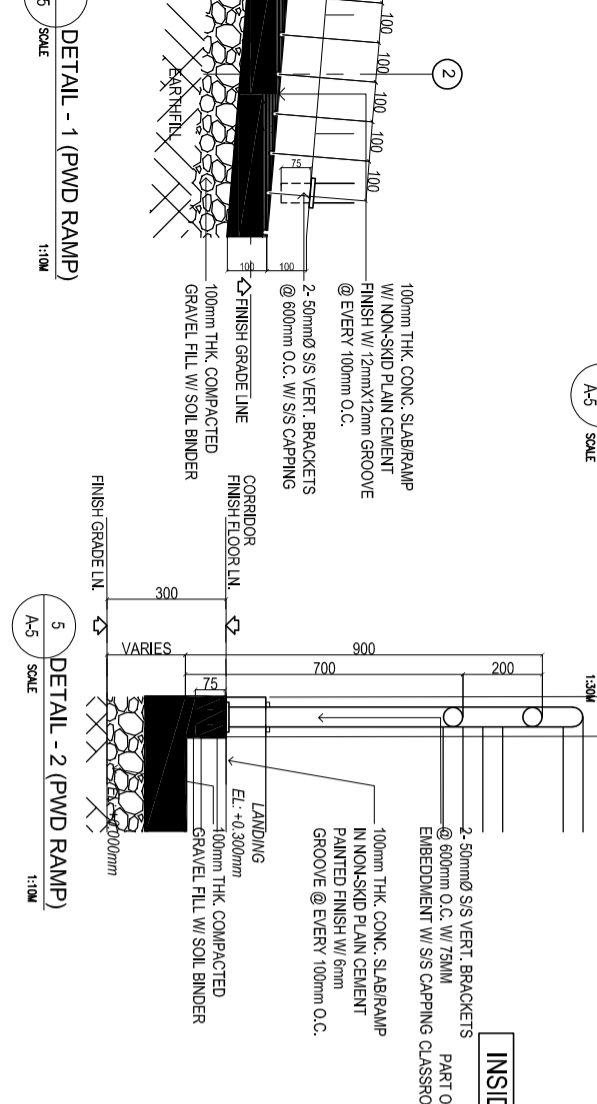
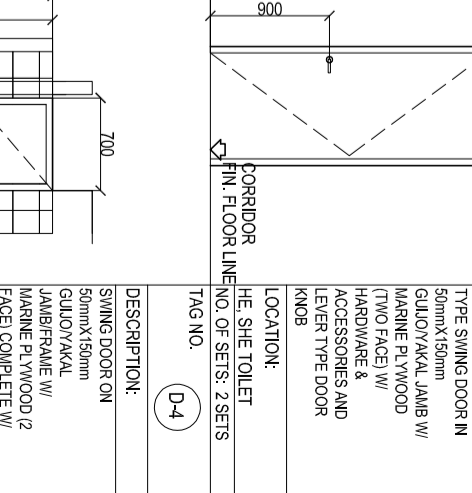
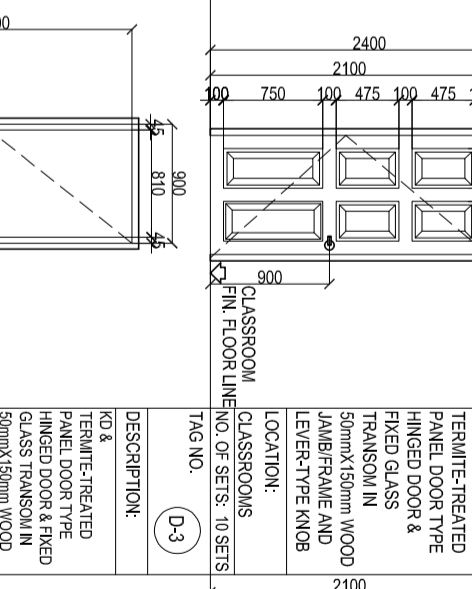
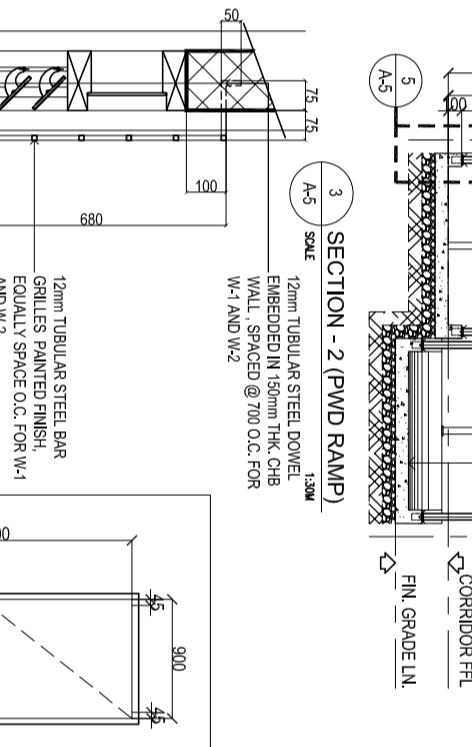
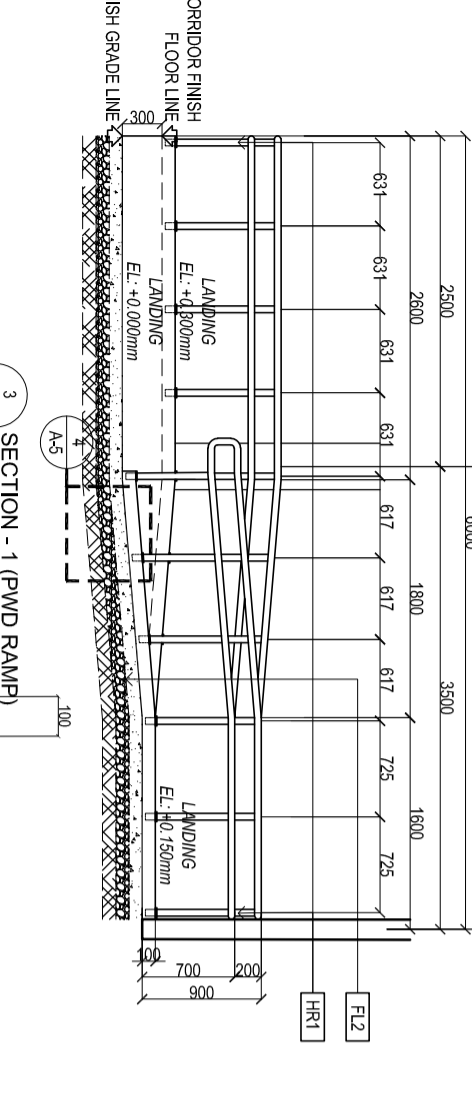
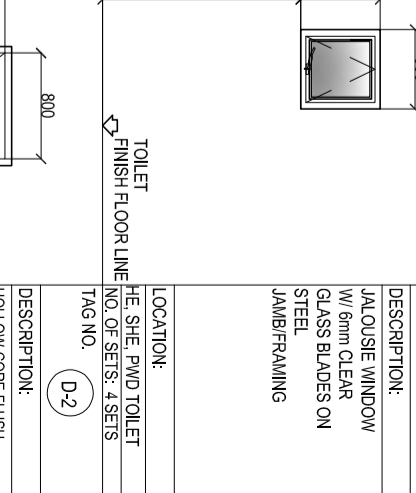
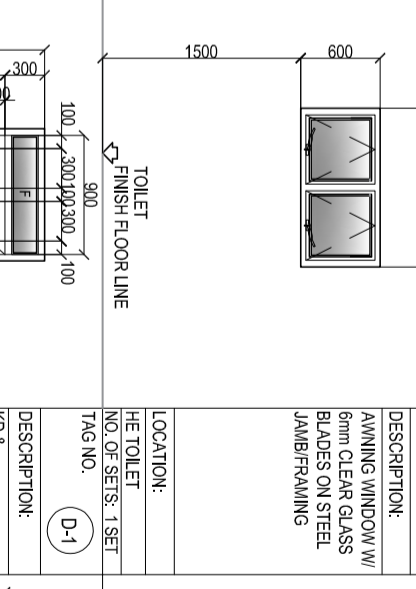
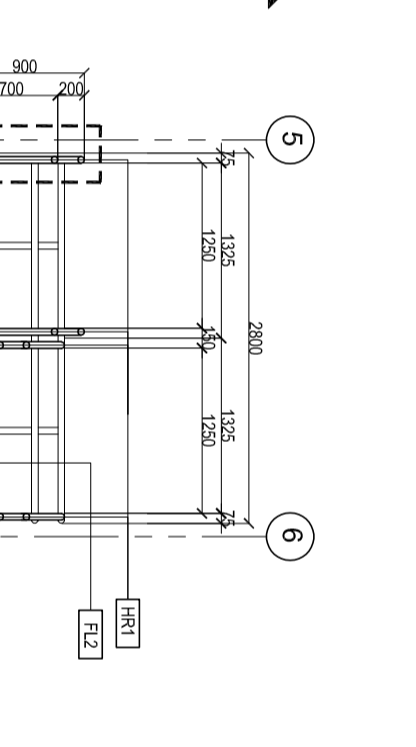
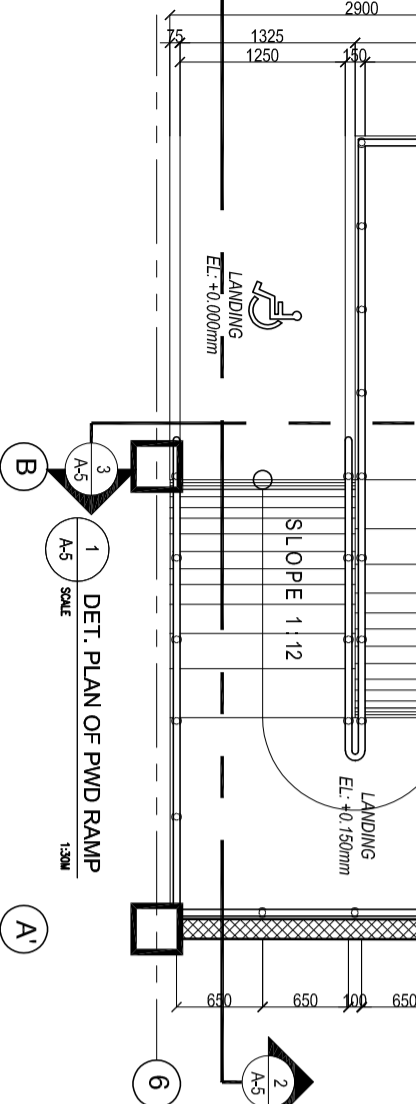
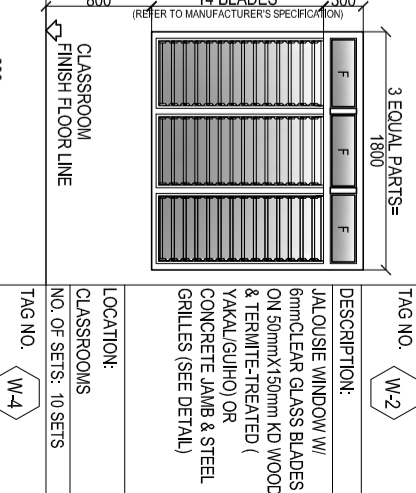
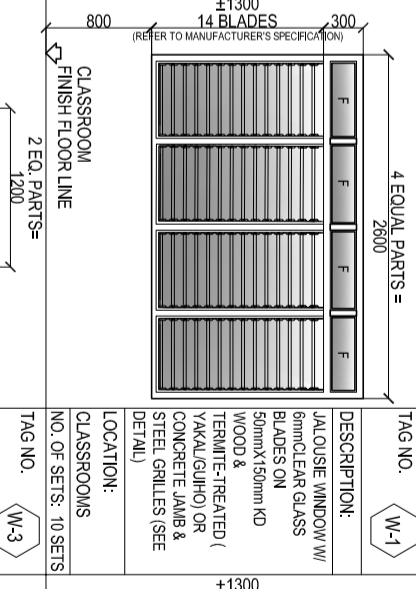
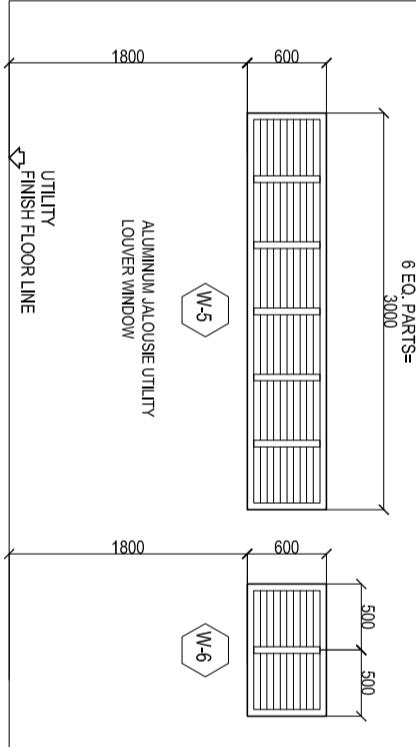
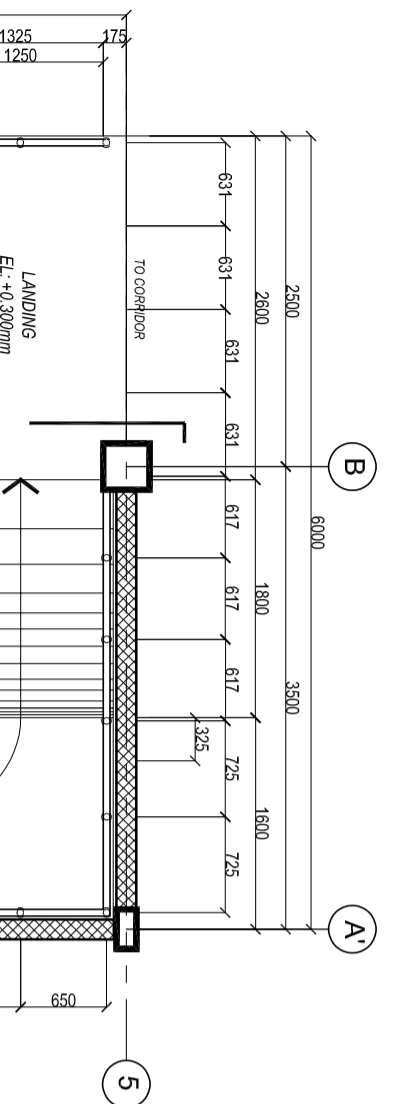


7 DETAIL - 3
SCALE 1:20M
A-4



9 DETAIL - 4 (CONC. SEATING)
SCALE 1:20M
A-4

<p>REPUBLIC OF THE PHILIPPINES DEPARTMENT OF EDUCATION EDUCATION FACILITIES DIVISION MERCALCO AVENUE, PASIG CITY</p>	<p>DESIGNER: JUNIELSON P. CULLADO C/O OPERATOR BD-DepEd</p>	<p>ARCHITECT: JET RAYMOND S. ALABASO ARCHITECT III BD-DepEd</p>	<p>RECOMMENDING APPROVAL: LUIS OF PUNSIWA, JR. ASST. CHIEF, BD-AS DepEd</p>	<p>RECOMMENDING APPROVAL: ANABELLE ESPANAN CHIEF OFFICE OF THE CHIEF, BD-AS</p>	<p>APPROVED BY: ALVIN DEL B. PASCUA UNDERSECRETARY FOR ADMINISTRATION</p>	<p>PROJECT TITLE: MODIFIED STANDARD DEPED ONE (1) STOREY, TWO (2) CLASSROOM SCHOOL BUILDING (WITH COMMON TOILETS @ ONE SIDE)</p>	<p>PROJECT CODE:</p>	<p>OWNER: DEPARTMENT OF EDUCATION DepEd</p>	<p>SHEET NO. A-4</p>
	<p>SHEET CONTENTS: RIGHT SIDE ELEVATION, CROSS SECTION, LONGITUDINAL SECTION, ISOMETRIC (WOOD CEILING DETAIL), DETAIL - 1, 2, 3, 4, 6, 7, 8, 9</p>								
	<p>LOCATION:</p>								
	<p>DATE: 2024-10-23</p>								



DESIGNED BY:
JUNELSON P. CULLAO
 CAD OPERATOR
 EPD-DepEd

ARCHITECT:
JET RAYMOND S. ALABASO
 ARCHITECT III
 EPD-DepEd

RECOMMENDING APPROVAL:
LUIS S. PURISIMA, JR.
 ASST. CHIEF, EPD-AS
 DepEd

RECOMMENDING APPROVAL:
ANNABELLE S. PANGAN
 CHIEF
 OFFICE OF THE CHIEF, EPD-AS

APPROVED BY:
ALAN DEL B. PASCUA
 UNDERSECRETARY FOR ADMINISTRATION

PROJECT TITLE:
MODIFIED STANDARD DEPED ONE (1) STOREY TWO (2) CLASSROOM SCHOOL BUILDING (WITH COMMON TOILETS @ ONE SIDE)

PROJECT CODE:
DEPARTMENT OF EDUCATION DepEd

OWNER:
DEPARTMENT OF EDUCATION DepEd

SHEET NO.
A-5

4 DETAIL - 1 (PWD RAMP)
 1:10M SCALE

3 SECTION - 1 (PWD RAMP)
 1:30M SCALE

5 DETAIL - 2 (PWD RAMP)
 1:10M SCALE

5 DETAIL - 2 (GRILLES)
 1:10M SCALE

5 SCHED. OF DOORS & WINDOWS
 1:10M SCALE

5 SCHED. OF DOORS & WINDOWS
 1:10M SCALE

5 SCHED. OF DOORS & WINDOWS
 1:10M SCALE

5 SCHED. OF DOORS & WINDOWS
 1:10M SCALE

5 SCHED. OF DOORS & WINDOWS
 1:10M SCALE

5 SCHED. OF DOORS & WINDOWS
 1:10M SCALE

GENERAL NOTES:
 VERIFY ACTUAL DIMENSION & NO. OF SETS BEFORE FABRICATION. MAKE ACTUAL SHOP DRAWING FOR ARCHITECT'S APPROVAL.

GENERAL NOTES:
 VERIFY ACTUAL DIMENSION & NO. OF SETS BEFORE FABRICATION. MAKE ACTUAL SHOP DRAWING FOR ARCHITECT'S APPROVAL.

GENERAL NOTES:
 VERIFY ACTUAL DIMENSION & NO. OF SETS BEFORE FABRICATION. MAKE ACTUAL SHOP DRAWING FOR ARCHITECT'S APPROVAL.

GENERAL NOTES:
 VERIFY ACTUAL DIMENSION & NO. OF SETS BEFORE FABRICATION. MAKE ACTUAL SHOP DRAWING FOR ARCHITECT'S APPROVAL.

GENERAL NOTES:
 VERIFY ACTUAL DIMENSION & NO. OF SETS BEFORE FABRICATION. MAKE ACTUAL SHOP DRAWING FOR ARCHITECT'S APPROVAL.

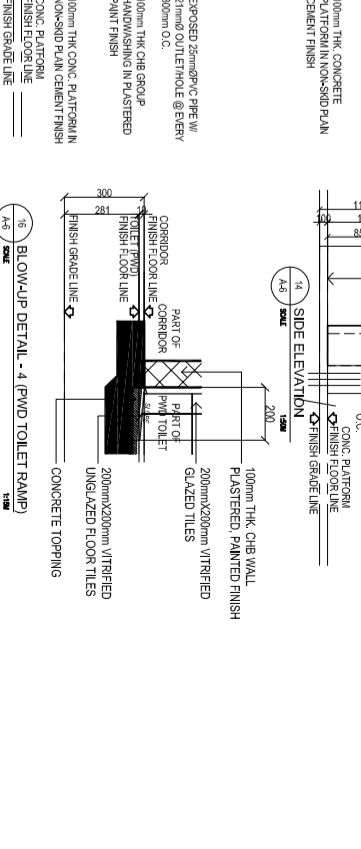
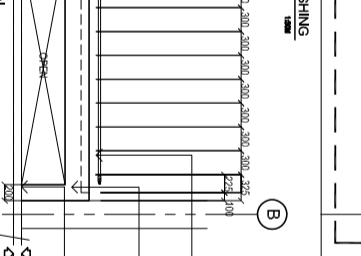
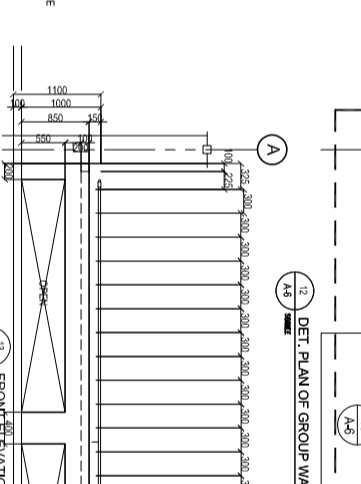
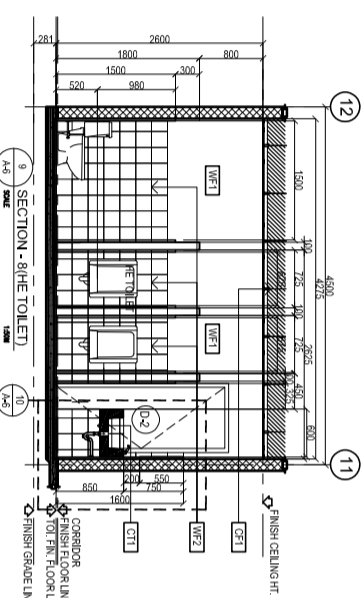
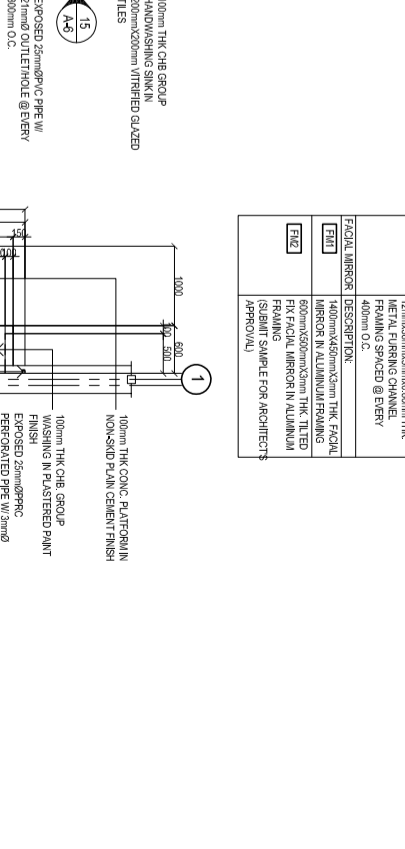
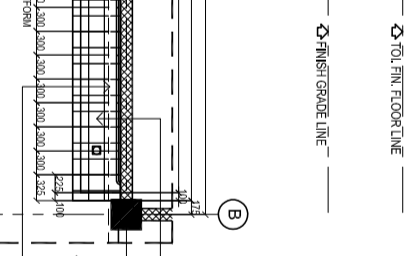
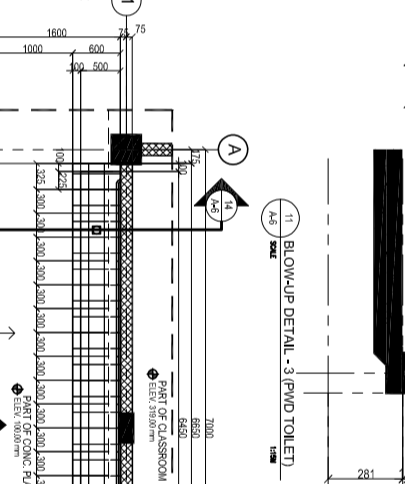
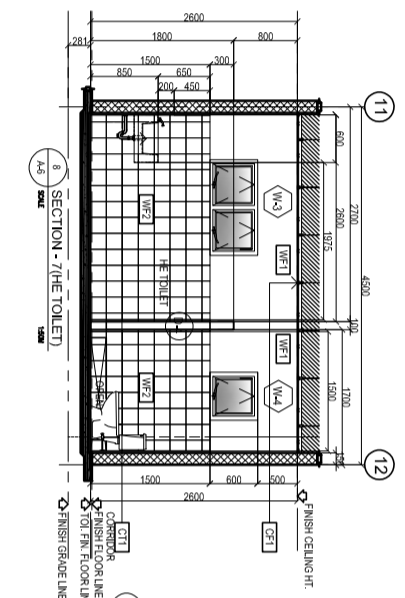
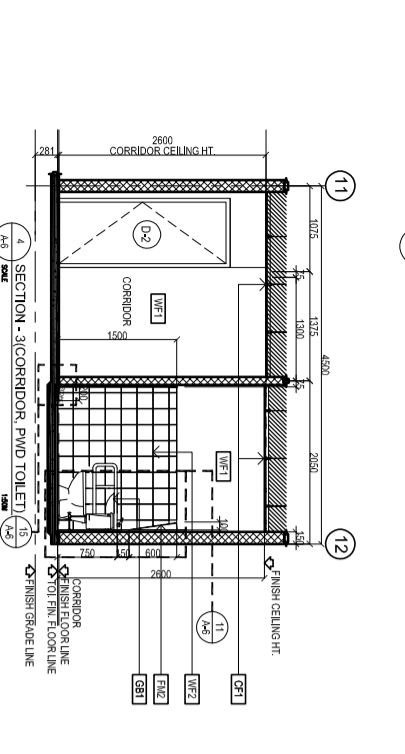
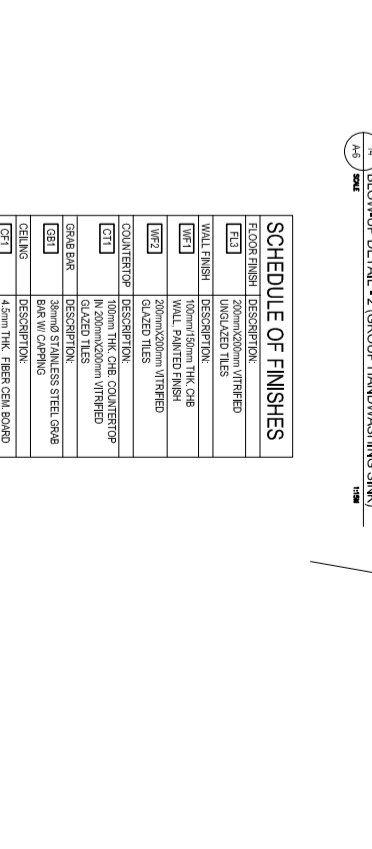
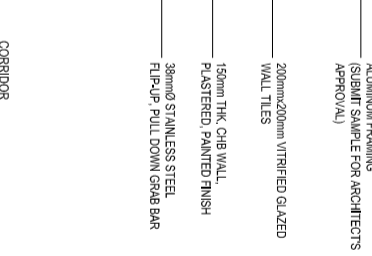
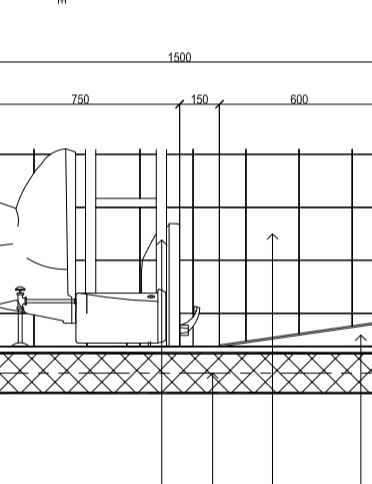
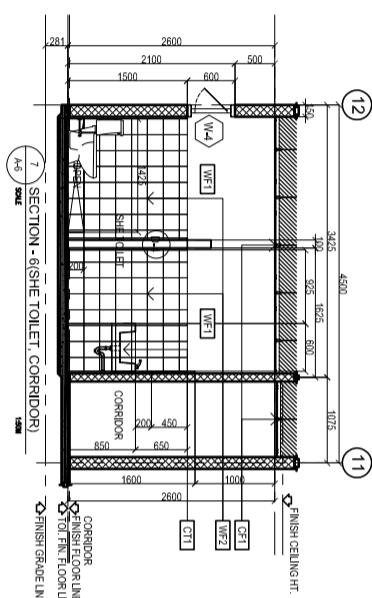
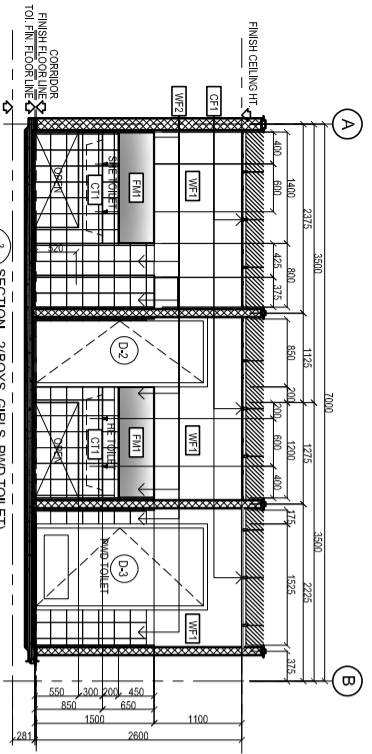
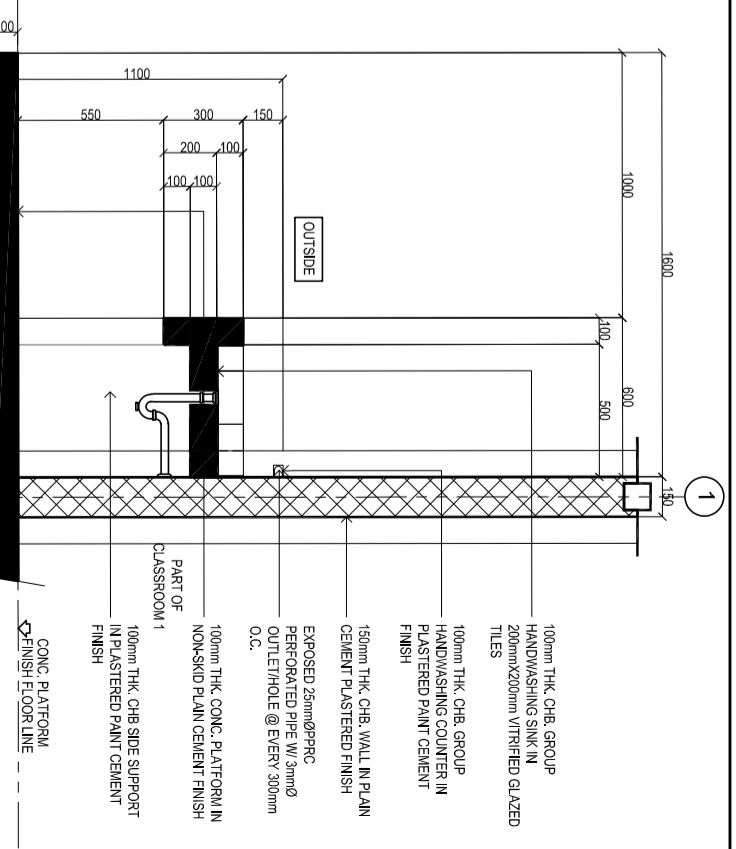
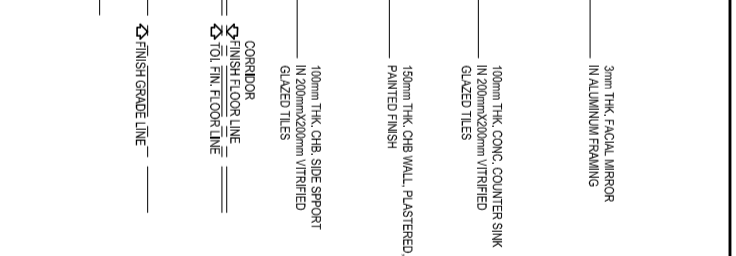
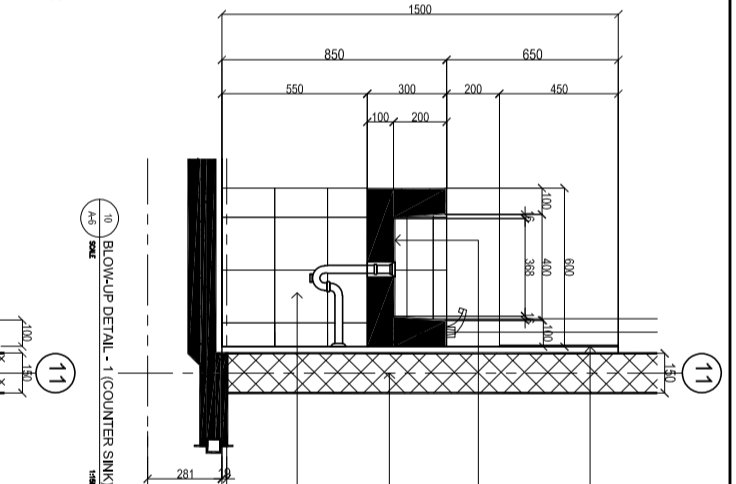
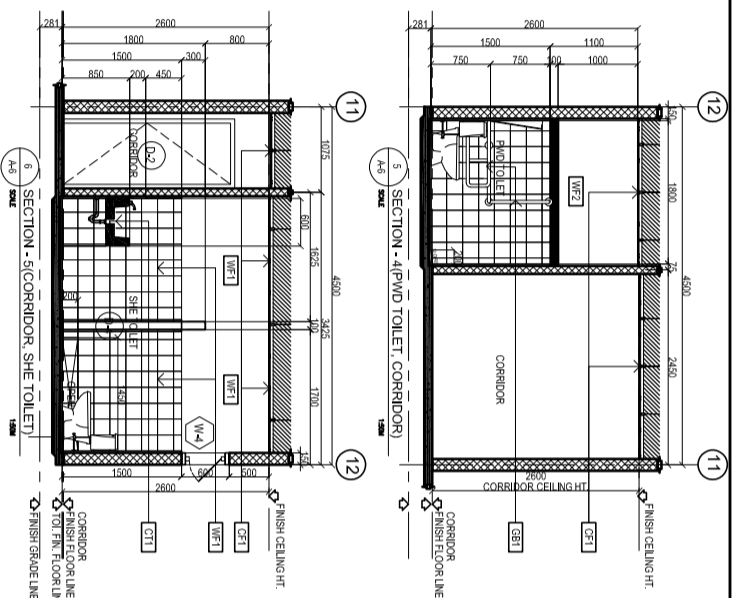
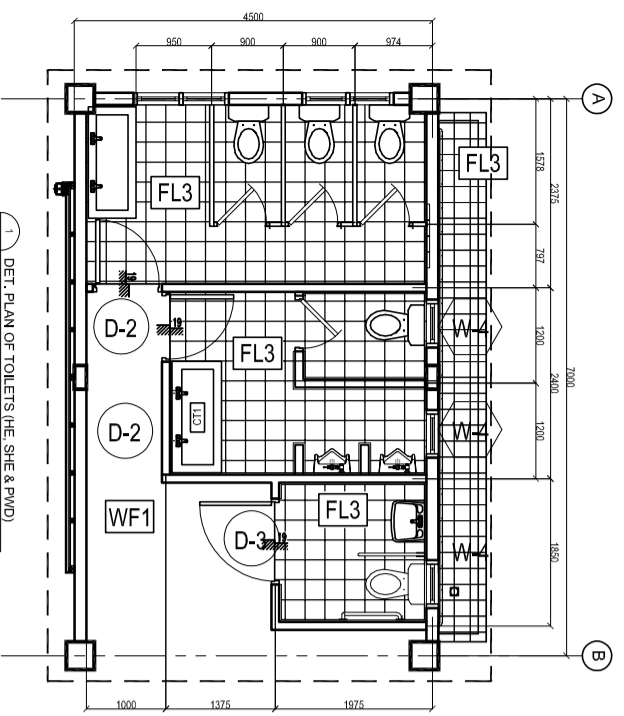
GENERAL NOTES:
 VERIFY ACTUAL DIMENSION & NO. OF SETS BEFORE FABRICATION. MAKE ACTUAL SHOP DRAWING FOR ARCHITECT'S APPROVAL.

GENERAL NOTES:
 VERIFY ACTUAL DIMENSION & NO. OF SETS BEFORE FABRICATION. MAKE ACTUAL SHOP DRAWING FOR ARCHITECT'S APPROVAL.

GENERAL NOTES:
 VERIFY ACTUAL DIMENSION & NO. OF SETS BEFORE FABRICATION. MAKE ACTUAL SHOP DRAWING FOR ARCHITECT'S APPROVAL.

GENERAL NOTES:
 VERIFY ACTUAL DIMENSION & NO. OF SETS BEFORE FABRICATION. MAKE ACTUAL SHOP DRAWING FOR ARCHITECT'S APPROVAL.

GENERAL NOTES:
 VERIFY ACTUAL DIMENSION & NO. OF SETS BEFORE FABRICATION. MAKE ACTUAL SHOP DRAWING FOR ARCHITECT'S APPROVAL.



NO.	DESCRIPTION
FL3	200mmx200mm VITRIFIED UNGLAZED TILES
WF1	100mm THK. CHB WALL, PLASTERED, PAINTED FINISH
WF2	100mm THK. CHB GROUP HANDWASHING SINK IN 200mmx200mm VITRIFIED GLAZED TILES
CT1	100mm THK. CHB COUNTERTOP IN 200mmx200mm VITRIFIED GLAZED TILES
GB1	30mm STAINLESS STEEL GRAB BAR
CE1	1.5cm THK. FIBER CEMENT BOARD CEILING PAINTED IN PLASTERED FINISH
FR1	1400mmx450mmx3mm THK. FACIAL MIRROR IN ALUMINUM FRAMING
FR2	600mmx500mmx3mm THK. TILED FIX FACIAL MIRROR IN ALUMINUM FRAMING SPACED @ EVERY 400mm

DRAWN BY :
JUNESON P. CILLADO
 CAD OPERATOR
 EDU-DepEd

ARCHITECT :
JET RAYMOND S. ALABISO
 ARCHITECT II
 EDU-DepEd

RECOMMENDING APPROVAL :
LUIS S. PURISIMA, JR.
 ASST. CHIEF, EDU-AS
 DepEd

RECOMMENDING APPROVAL :
ANNABELLE R. PANGAN
 CHIEF
 OFFICE OF THE CHIEF, EDU-AS

APPROVED BY :
ALAN DEL B. PASCUA
 UNDERSECRETARY FOR ADMINISTRATION

PROJECT TITLE :
MODIFIED STANDARD DEPED ONE (1) STOREY TWO (2) CLASSROOM SCHOOL BUILDING (WITH COMMON TOILETS @ ONE SIDE)

PROJECT CODE:
DEPARTMENT OF EDUCATION DepEd

SHEET NO.:
A-6
7