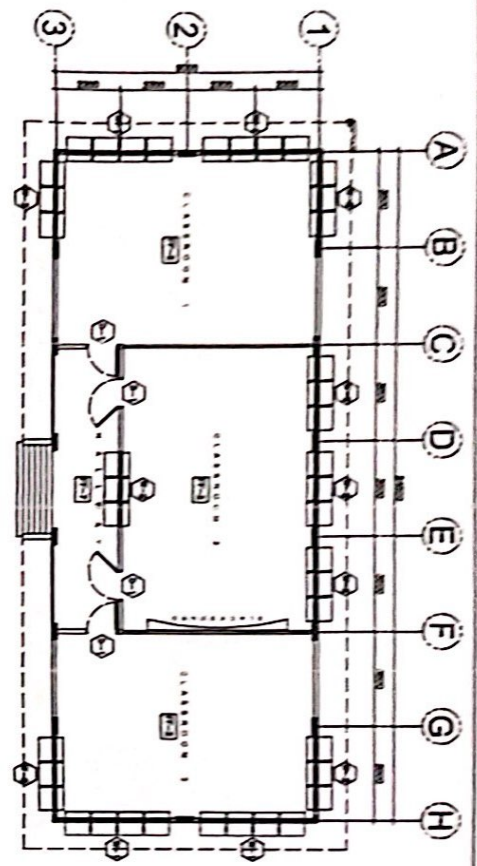
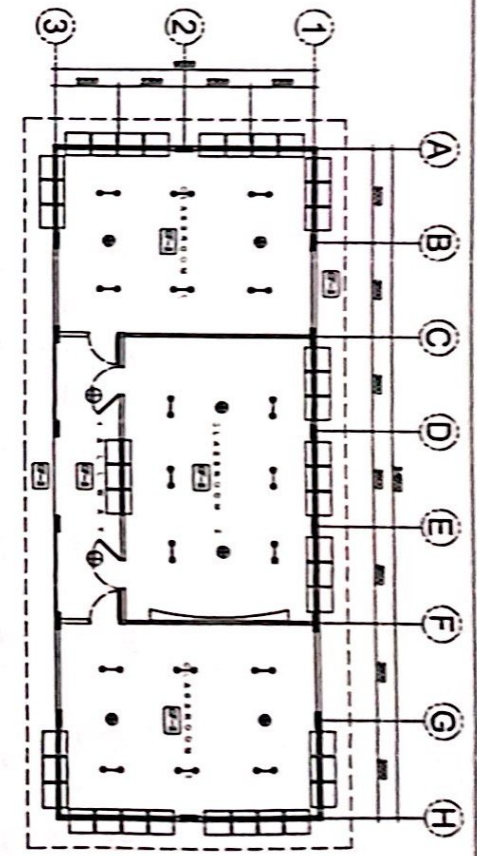


1 PERSPECTIVE  
A-1 SOLE  
INT

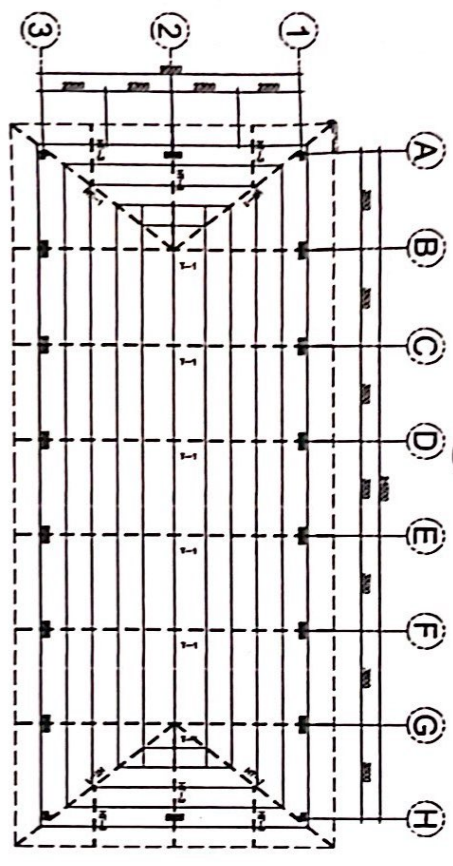
 	<p>DESIGNED BY <b>TOMÁS M. GONZALES</b> ARCHITECT</p>	<p>RECORDING ARCHITECT <b>ROLF E. LABIS</b> ARCHITECT</p>	<p>APPROVED <b>RANDOLPH B. TORTOLA</b> ARCHITECT &amp; DIVISION SUPERINTENDENT</p>	<p>PROJECT TITLE <b>RESTORATION OF GABALDON BUILDING</b> MOLUCAN CENTRAL SCHOOL, MOLUCAN, EL SALVADOR CITY</p>	<p>OFFICE DIVISION OF EL SALVADOR DEFEID</p>	<p>SHEET NUMBER MOLUCAN</p>	<p>SHEET NO. 1 6</p>
---	---	---	--	--	--	---------------------------------	------------------------------



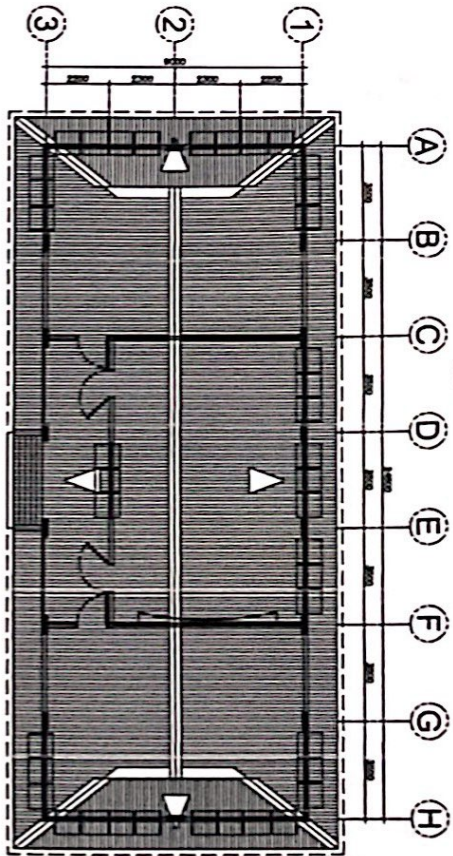
1 FLOOR PLAN  
A-2 SCALE 1/16" = 1'-0"



1 REFLECTED CEILING PLAN  
A-3 SCALE 1/16" = 1'-0"



1 ROOF FRAMING PLAN  
S-2 SCALE 1/16" = 1'-0"



1 ROOF PLAN  
A-4 SCALE 1/16" = 1'-0"



DESIGNED BY  
TONYIE M. M. GONZALES

REVISIONS APPROVAL  
RODNEY B. LARIS

APPROVAL  
RANDOLPH B. TORTOLA

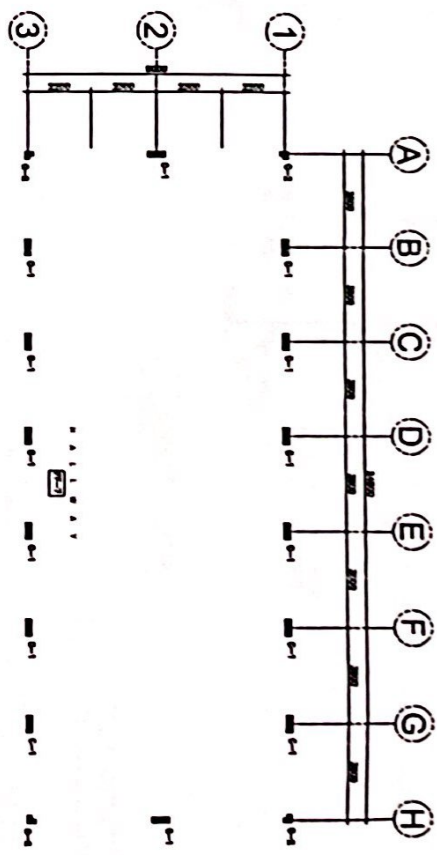
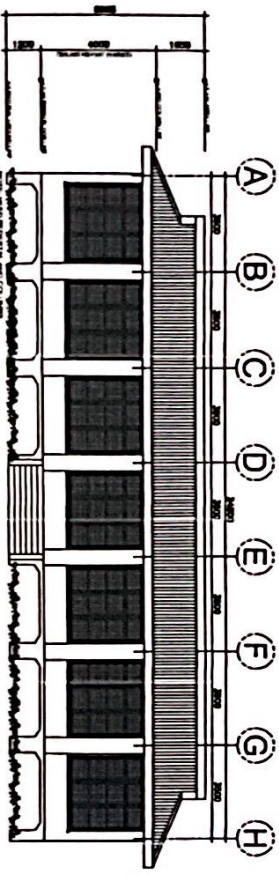
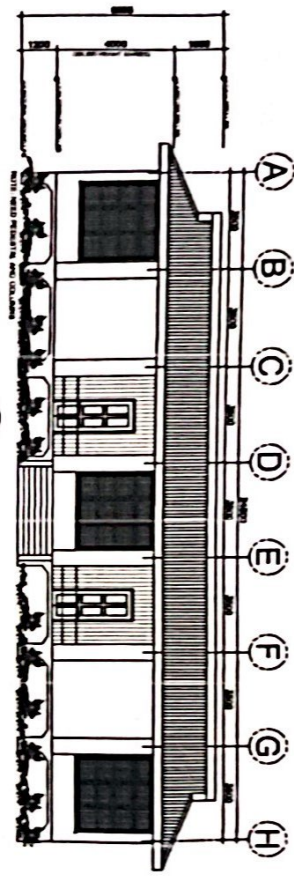
PROJECT TITLE  
RESTORATION OF  
GABALDON BUILDING  
WORK IN CENTRAL SCHOOL  
MOLLEMAN, MISSISSIPPI

DIVISION OF THE STATE ARCHITECT  
DEPT. OF THE AGRI. & MEAT IND.

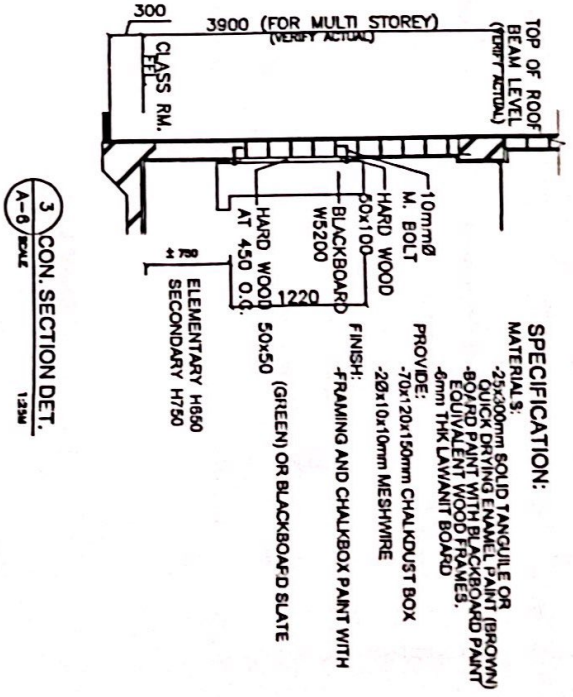
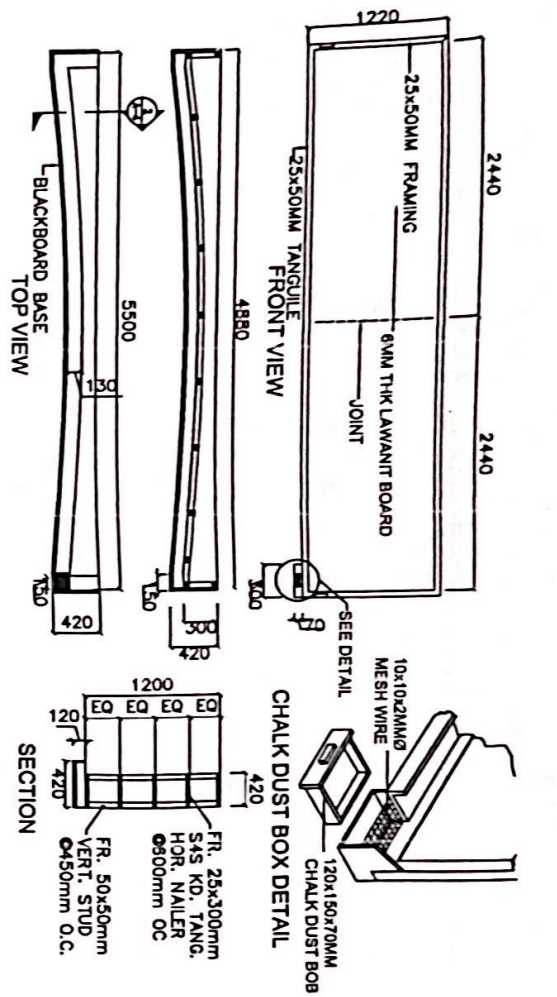
DATE OF PLAN  
NOVEMBER 1964

SHEET NO.  
2/6



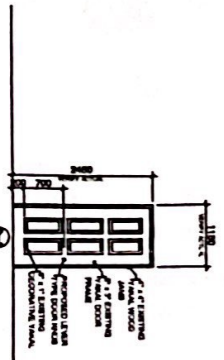


	<p>PROYECTANTE  <b>TONYIL ANTONIO GONZALES</b>  <small>ING. EN ARQUITECTURA</small></p>	<p>COORDINADOR GENERAL  <b>ROLY B. LARIS</b>  <small>ING. EN ARQUITECTURA</small></p>	<p>PROYECTADO  <b>RANDOLPH B. TORTOLA</b>  <small>MAESTRO EN DISEÑO SUPERINTENDENTE</small></p>	<p>PROYECTO FINAL  <b>RESTORACION DE GABALDON BUILDING</b>  <small>WOLFE ANTONIO GONZALES          MOJCA AN. EL SALVADOR CITY</small></p>	<p>REVISOR  <b>DAVIDSON OF EL SALVADOR</b>  <small>INGENIERO</small></p>	<p>FECHA DE ENTREGA  <small>15/05/2024</small></p>	<p>HOJA NO.  <b>3</b>  <small>DE 6</small></p>
--	---	---	---	---	--	--	--

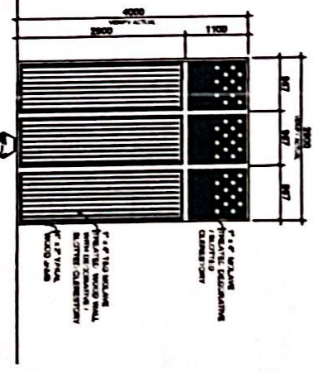
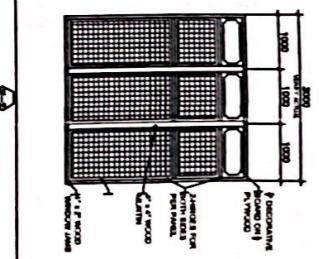


2 BLACKBOARD DETAIL  
A-6 SCALE 1:50M

3 CON. SECTION DET.  
A-6 SCALE 1:25M



1 SCHEDULE OF DOORS, WINDOWS AND WALLS  
A-6 SCALE 1:50M

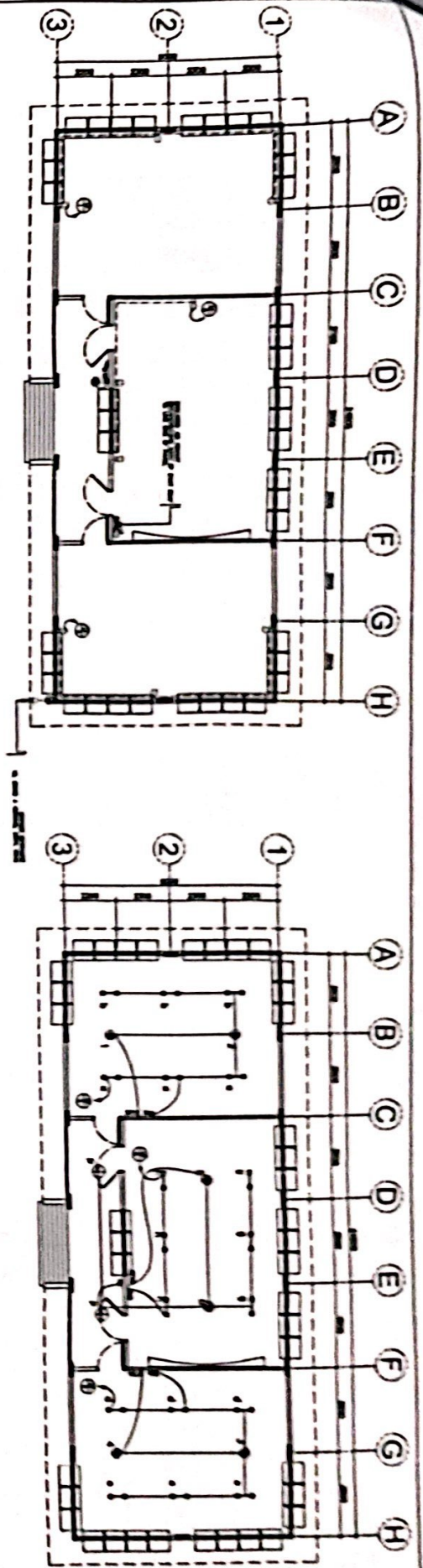


4 CEILING FINISHES  
A-5 SCALE N/A

3 FLOOR FINISHES  
A-5 SCALE N/A

	 <b>TONNIE M. M. GONZALES</b> <small>ARCHITECT</small>	 <b>ROLFE E. LARIS</b> <small>ARCHITECT</small>	 <b>RANDOLPH B. TORTOLA</b> <small>ARCHITECT</small>	<b>RESTORATION OF GABALDON BUILDING</b> MEDICAN CENTRAL SCHOOL MEDICAN EL SALVADOR CITY	DIVISION OF EL SALVADOR DE PID	 <b>RAFAEL A. TORRES</b> <small>ARCHITECT</small>	 <b>RAFAEL A. TORRES</b> <small>ARCHITECT</small>
	<b>PROYECTO</b>	<b>REVISOR</b>	<b>APROBADO</b>	<b>PROYECTO</b>	<b>PROYECTO</b>	<b>PROYECTO</b>	<b>PROYECTO</b>





1 POWER LAYOUT  
E-2  
SCALE

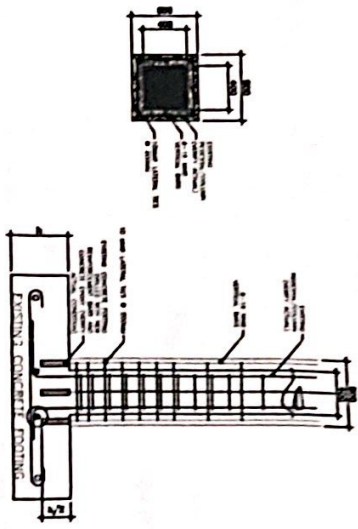
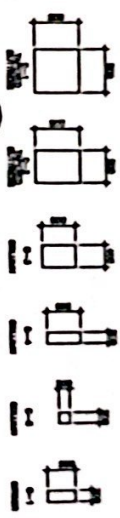
1 LIGHTING LAYOUT  
E-3  
SCALE

LAMPS TO BE USED:

⊕ - 20WATTS LIGHTS on 300mm diameter globe diffuser w/ metal hanger (hallways)

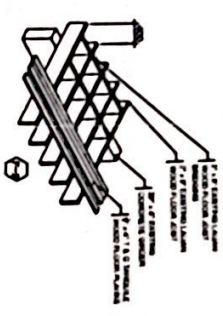
⊖ - 2 x 40WATTS lights on 300mm diameter reflectorized bowl-type housing

2 TYPICAL COLUMN AND GIRDER SIZE  
SS-4  
SCALE

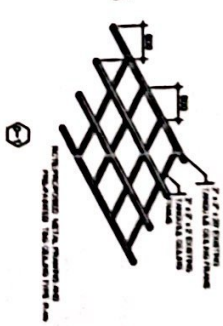


3 TYP. RETROFITTING METHOD  
SS-4  
SCALE

4 FLOOR FRAMING  
SS-4  
SCALE

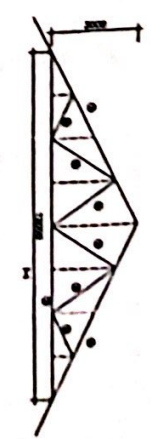


5 CEILING FRAMING  
SS-4  
SCALE



NO.	DESCRIPTION	QTY	UNIT
1	20WATT LIGHT	10	EA
2	40WATT LIGHT	2	EA
3	300MM DIA GLOBE	10	EA
4	300MM DIA BOWL	2	EA

6 TYPICAL TRUSS SCHEDULE  
SS-4  
SCALE



	 <b>TONNIE M. GONZALES</b> ARCHITECT	 <b>ROLANDO E. LAPIS</b> ARCHITECT	 <b>RANDOLPH B. TORTOLA</b> ARCHITECT	<b>RESTORATION OF GABALDON BUILDING</b> WALKER CENTRAL SCHOOL MELICAN EL SALVADOR CITY	<b>INTEGRITY OF EL SALVADOR</b> DESIGN	<b>5</b>
	 <b>ROLANDO E. LAPIS</b> ARCHITECT	 <b>RANDOLPH B. TORTOLA</b> ARCHITECT	<b>RESTORATION OF GABALDON BUILDING</b> WALKER CENTRAL SCHOOL MELICAN EL SALVADOR CITY	<b>INTEGRITY OF EL SALVADOR</b> DESIGN	<b>6</b>	



