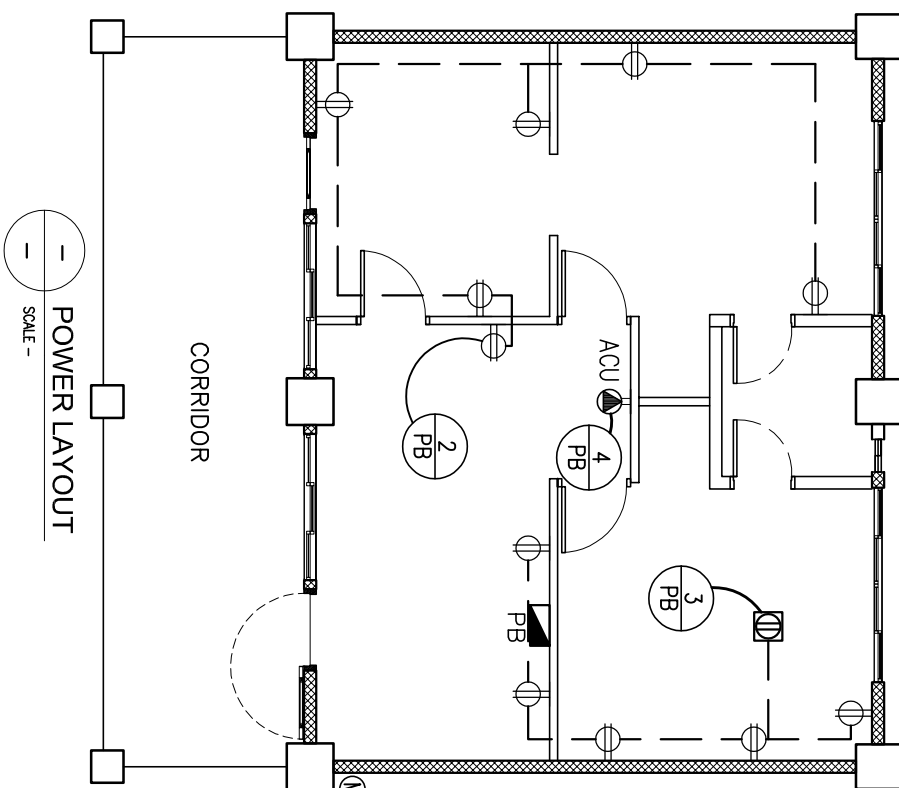


— LIGHTING LAYOUT
SCALE —



— POWER LAYOUT
SCALE —

↑ SERVICE ENTRANCE
SINGLE PHASE 230 VOLTS

3-E1 SCHEDULE OF LOADS AND COMPUTATION

PANELBOARD "PB"

CKT. NO.	LOAD DESCRIPTION	VA PER CKT.	VOLTS	BRANCH CKT. BREAKER			SIZE OF HOMERUN (WIRES IN CONDUIT)
				AF	P	AT	
1	LIGHT OUTLETS 14 x 80w 3 x 18w	1468	230	50	2	20	2-3.5mm ² THHN IN 20mm \varnothing PVC
2	CONVENIENCE OUTLETS 6 x 180w	1350	230	50	2	20	2-3.5mm ² THHN + 1-3.5mm ² TW(G) IN 20mm \varnothing PVC
3	CONVENIENCE OUTLETS 6 x 180w	1350	230	50	2	20	2-3.5mm ² THHN + 1-3.5mm ² TW(G) IN 20mm \varnothing PVC
4	ACU-5HP	8050	230	50	2	50	2-8.0mm ² THHN + 1-3.5mm ² TW(G) IN 25mm \varnothing PVC
TOTAL		12218	MACB: 100AF, 2P, 230V, 70AT, 15KAIC				

$$I @ 100\% DF = \left(\frac{12218}{230} \right) 1.00 + 0.25(28) = 60.12 \text{ AMP}$$

USE: 2-14mm² THHN + 1-5.5mm² TW(G) IN 25mm \varnothing RSC

DRAWN BY :
Junerson P. Cullado
JUNERSON P. CULLADO
CDD OPERATOR
ED-044ED

CHECKED BY :
Felix Macabandian
FELIX MACABANDIAN
PROFESSIONAL ELECTRICAL ENGINEER
ED-044ED

RECOMMENDING APPROVAL :
Luis G. Purisima, Jr.
LUIS G. PURISIMA, JR.
ASST. CHIEF, ED-OPS
044ED

RECOMMENDING APPROVAL :
Annabelle R. Rangan
ANNABELLE R. RANGAN
CHIEF
OFFICE OF THE CHIEF, ED-OPS

APPROVED BY :
Alvin B. Pascua
ALVIN B. PASCUA
UNDERSECRETARY FOR ADMINISTRATION

PROJECT TITLE :
**SCHOOL CLINIC
(7 x 9)**

PROJECT CODE :

OWNER :
**DEPARTMENT OF EDUCATION
DepED**

SHEET NO. :
**E-1
1**

SHEET COMMENTS :
LIGHTING LAYOUT
POWER LAYOUT