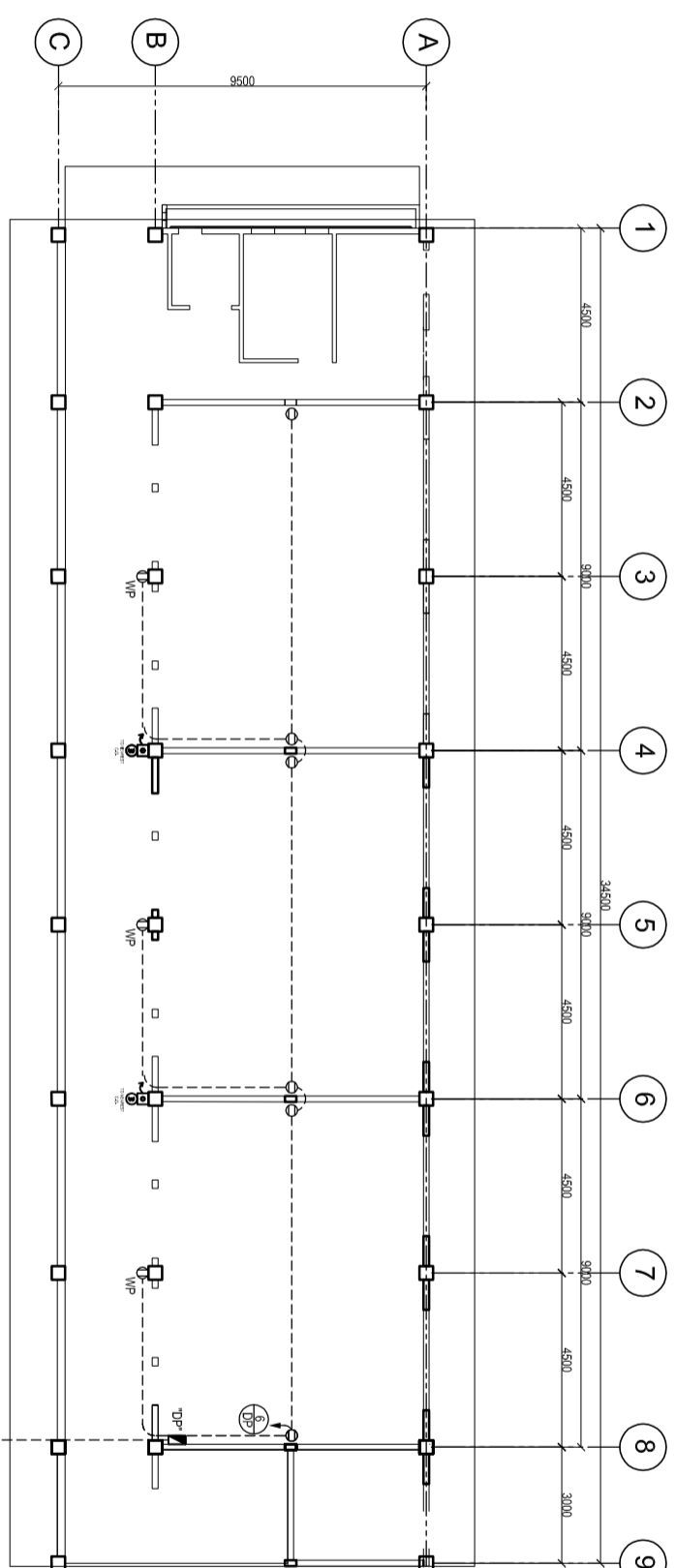


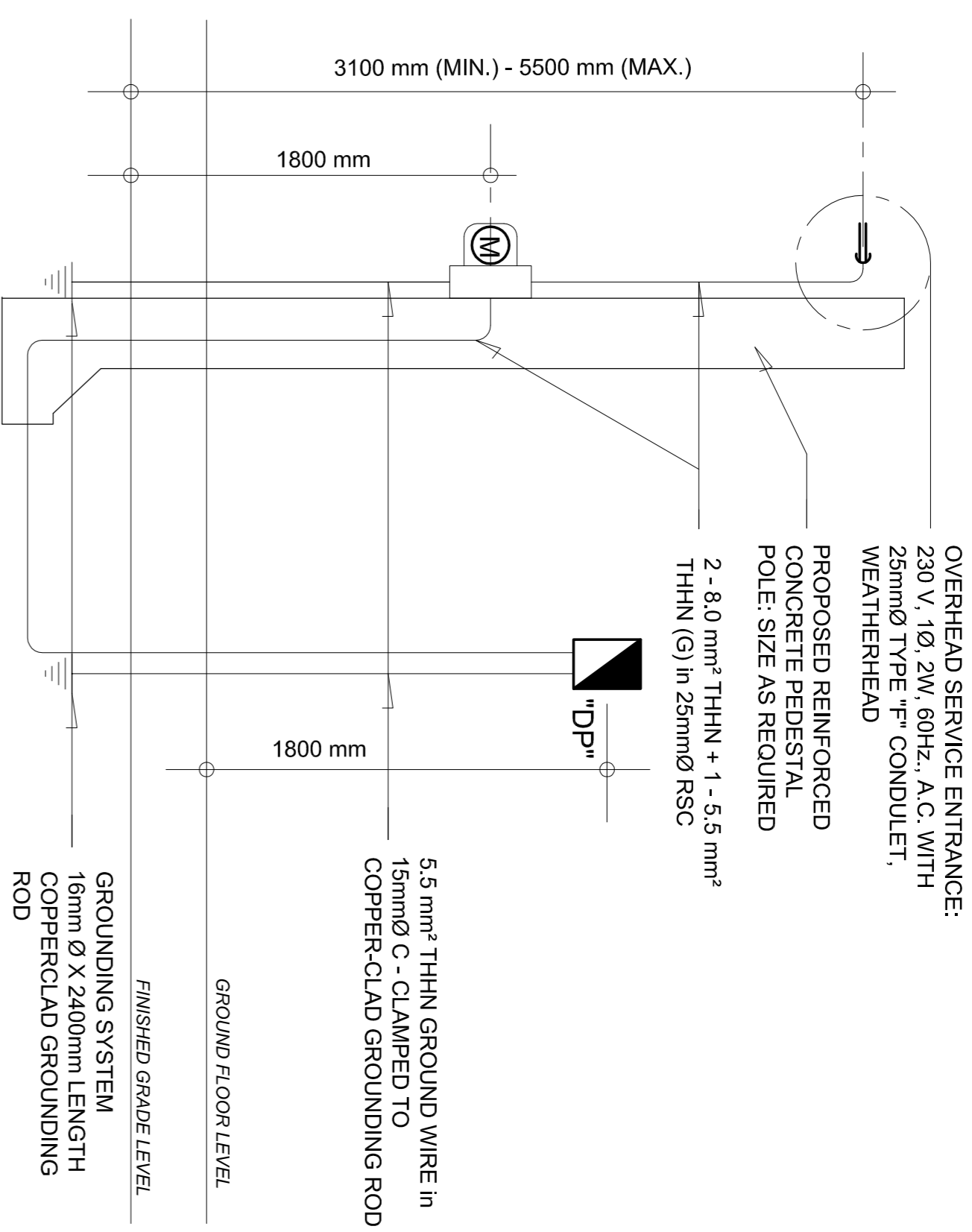
1 LIGHTING LAYOUT
 SCALE: E-1
 1:100 m.



2 POWER LAYOUT
 SCALE: E-1
 1:100 m.

PROPOSED OVERHEAD ELECTRICAL SERVICE ENTRANCE (REFER TO ELECTRICAL RISER DIAGRAM). NOTE: VERIFY EXACT LOCATION

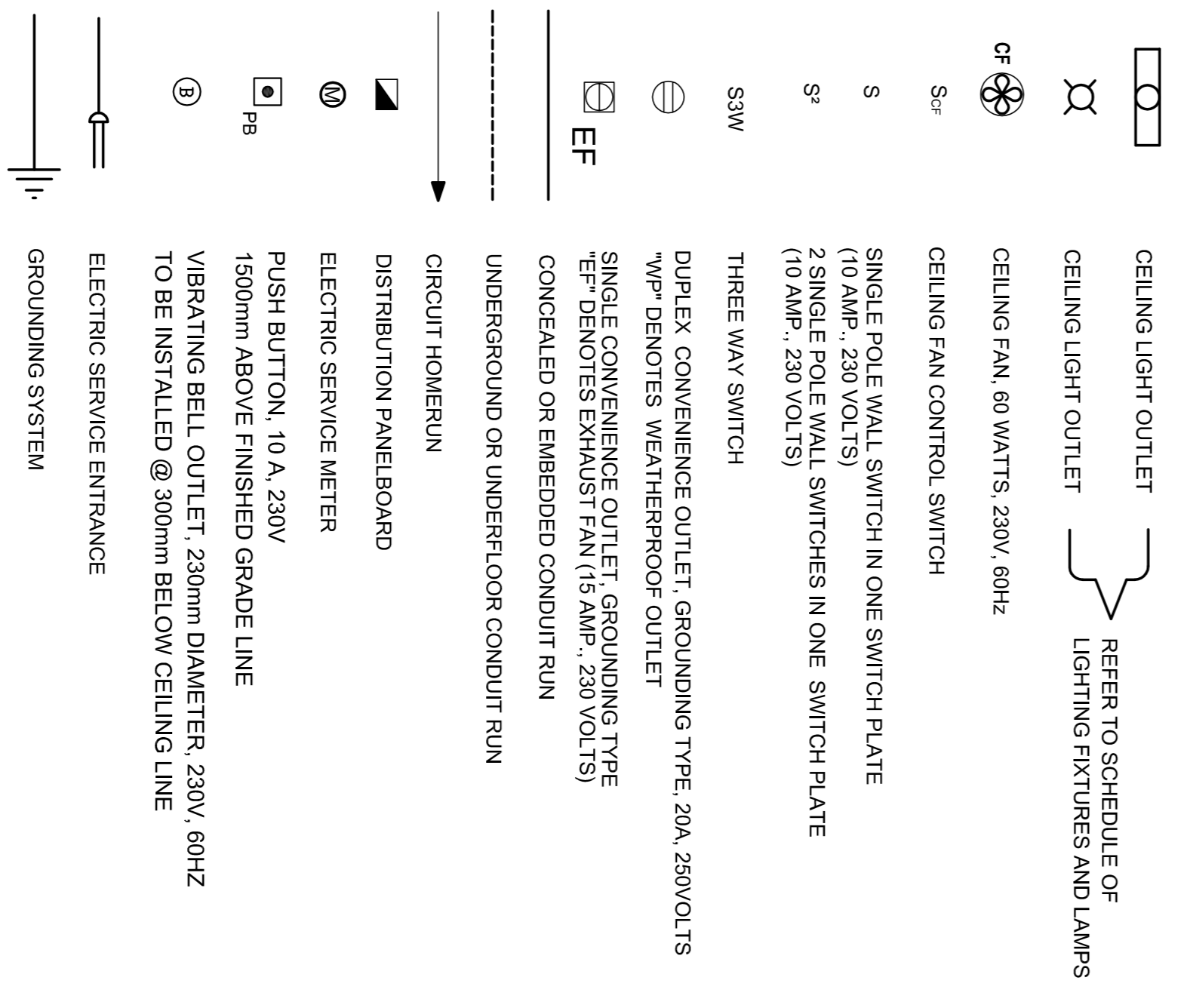
1 SINGLE LINE DIAGRAM
SCALE NTS



GENERAL NOTES:

- ALL ELECTRICAL WORKS SHALL BE DONE IN ACCORDANCE WITH THE PROVISIONS OF THE LATEST EDITION OF THE PHILIPPINE ELECTRICAL CODE, EXISTING APPLICABLE ORDINANCES, RULES AND REGULATIONS OF THE LOCAL GOVERNMENT AND WITH THE REQUIREMENTS OF THE LOCAL POWER COMPANY.
- THE TYPE OF SERVICE POWER SUPPLY TO BE USED SHALL BE SINGLE-PHASE, 2-WIRE, 230V, 60 HERTZ, A.C.
- THE CONTRACTOR SHALL VERIFY AND ORIENT THE ACTUAL LOCATION OF SERVICE ENTRANCE FOR CONNECTION TO THE POWER COMPANY SERVICE POINT.
- UNLESS OTHERWISE SPECIFIED, THE MINIMUM SIZE OF WIRE AND GALVANIZED RIGID STEEL CONDUIT TO BE USED SHALL BE 35mm² THHN AND 19mm NOMINAL DIAMETER, RESPECTIVELY. LIKEWISE ALL ELECTRICAL WIRES SHALL BE COLOR-CODED.
- ALL LIGHTING CIRCUIT HOMERUNS AND CONVENIENCE OUTLETS SHALL BE WIRED WITH NOT LESS THAN 3.5 mm² IN SIZE.
- WHEREVER REQUIRED AND NECESSARY, PULL OR JUNCTION BOXES SHALL BE INSTALLED AT CONVENIENT AND INCONSPICUOUS LOCATION, ALTHOUGH SUCH BOXES ARE NOT SHOWN ON THE PLAN NOW MENTIONED IN THE SPECIFICATIONS.
- ALL NON-CURRENT CARRYING METAL PARTS OF ELECTRICAL EQUIPMENT SHALL BE PROPERLY GROUNDED IN ACCORDANCE WITH THE PROVISIONS OF THE LATEST EDITION OF THE PHILIPPINE ELECTRICAL CODE.
- ALL MATERIALS TO BE USED SHALL BE BRAND NEW AND OF THE APPROVED TYPE FOR LOCATION AND PURPOSE.
- STANDARD TYPE OF ACCESSORIES, SPLONG DEVICES, TERMINATIONS AND OTHER APPURTENANCES FOR THE ENTIRE ELECTRICAL INSTALLATION SHALL BE USED.
- ALL WALL OUTLETS SHALL BE INSTALLED AT THE FOLLOWING HEIGHTS ABOVE THE FINISHED FLOOR LEVEL, UNLESS NOTED IN THE PLAN.
 - WALL SWITCHES @ 1300mm FROM FLOOR TO FINISH TO THE BOTTOM OF THE DEVICE
 - WALL CONVENIENCE OUTLETS @ 300 mm FROM FLOOR TO FINISH TO THE BOTTOM OF THE DEVICE
 - WALL FAN OUTLET 1800MM
- ALL WORKS SHALL BE DONE IN GOOD WORKMANSHIP MANNER.
- ALL ELECTRICAL WORKS SHALL BE DONE UNDER THE DIRECT AND IMMEDIATE SUPERVISION OF A DULY REGISTERED ELECTRICAL ENGINEER.

ELECTRICAL SYMBOLS:

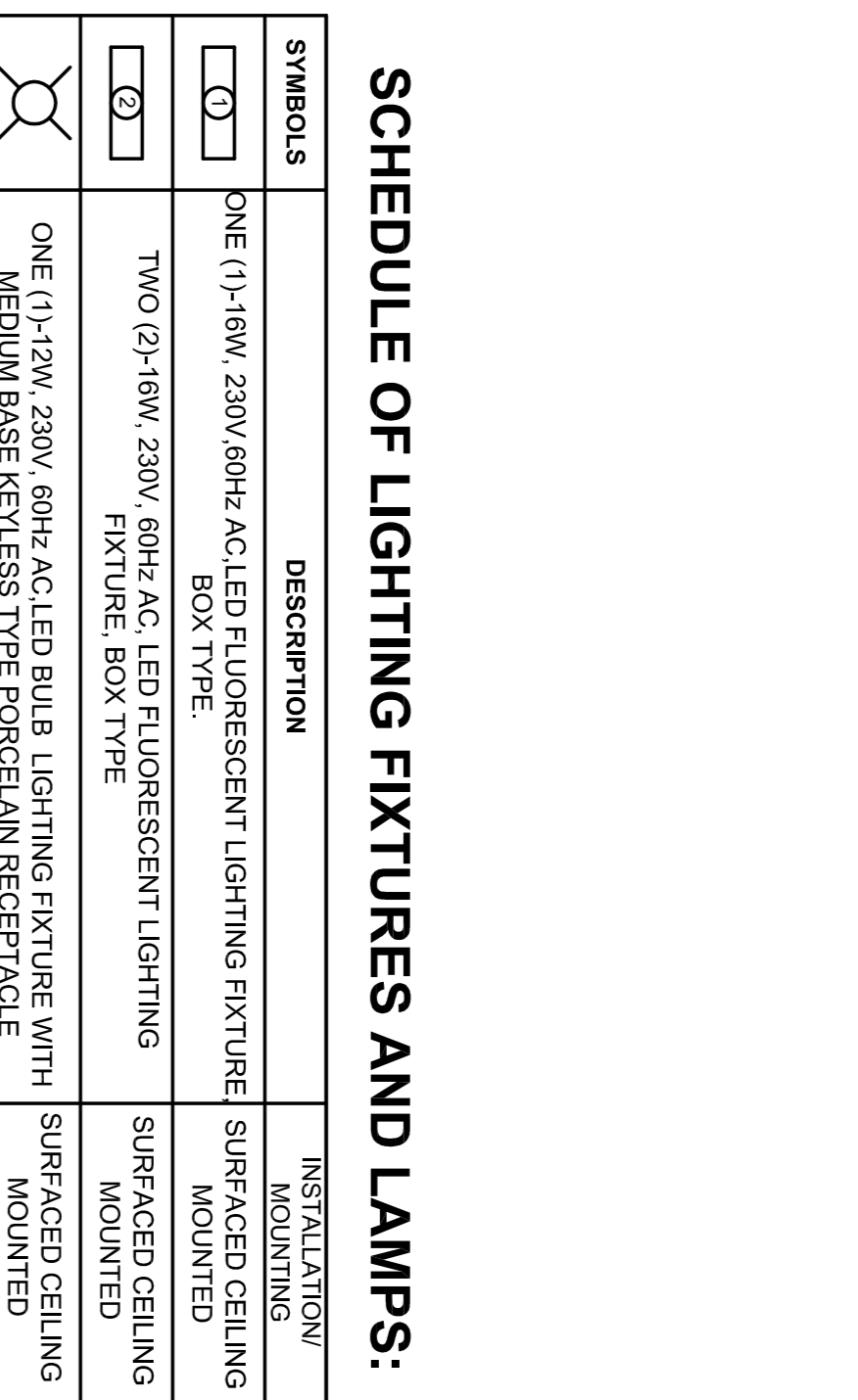


2 SCHEDULE OF LOADS
SCALE NTS

CKT. NO	DESCRIPTION	DPA		SCHEDULE OF LOADS		MAIN FEEDER SIZE		MAIN BREAKER SIZE		CONDUIT SIZE	
		VOLT-AMPERE	VOLT-AMPERE	AB	BC	CD	3φ	AT	AF		P
1	LIGHTING OUTLET	360	230	1.57				2	2- 3.5 mm²	1- 3.5 mm²	20 mmØ PVC
2	LIGHTING OUTLET	720	230	3.13				2	2- 3.5 mm²	1- 3.5 mm²	20 mmØ PVC
3	LIGHTING OUTLET	780	230	2.71				2	2- 3.5 mm²	1- 3.5 mm²	20 mmØ PVC
4	CEILING FAN	720	230	3.13				2	2- 3.5 mm²	1- 3.5 mm²	20 mmØ PVC
5	CEILING FAN	1440	230	6.26				2	2- 3.5 mm²	1- 3.5 mm²	20 mmØ PVC
6	LIGHTING OUTLET	1620	230	7.04				2	2- 3.5 mm²	1- 3.5 mm²	20 mmØ PVC
7	S P A R E	1500	230	6.52				2	2- 3.5 mm²	1- 3.5 mm²	20 mmØ PVC
8	S P A C E										STUB-OUT
TOTAL											

FOR FEEDER CURRENT	FOR MAIN FEEDER SIZE	FOR MAIN BREAKER SIZE
3φH + 1PH LOAD	X	AT
25 % CONTINUOUS LOAD	=	AF
HIGHEST CURRENT MOTOR DEMAND FACTOR	=	P
TOTAL LOAD CURRENT	=	KAIC

3 ELECTRICAL RISER DIAGRAM
SCALE NTS



SCHEDULE OF LIGHTING FIXTURES AND LAMPS:

SYMBOLS	DESCRIPTION	INSTALLATION/MOUNTING
□	ONE (1)-16W, 230V/60Hz AC LED FLUORESCENT LIGHTING FIXTURE BOX TYPE	SURFACED CEILING MOUNTED
⊗	TWO (2)-16W, 230V, 60Hz AC, LED FLUORESCENT LIGHTING FIXTURE, BOX TYPE	SURFACED CEILING MOUNTED
⊗	ONE (1)-12W, 230V, 60Hz AC LED SUB. LIGHTING FIXTURE WITH MEDIUM BASE KETLESS TYPE PORCELAIN RECEPTACLE	SURFACED CEILING MOUNTED

NOTE: ALL FLUORESCENT LIGHTING FIXTURES SHALL BE LED LOWER TYPE LUMINAIRE FACTOR, PRE-HEAT, COMPLETE WITH ALL NECESSARY ACCESSORIES, WIRED AND READY FOR USE.