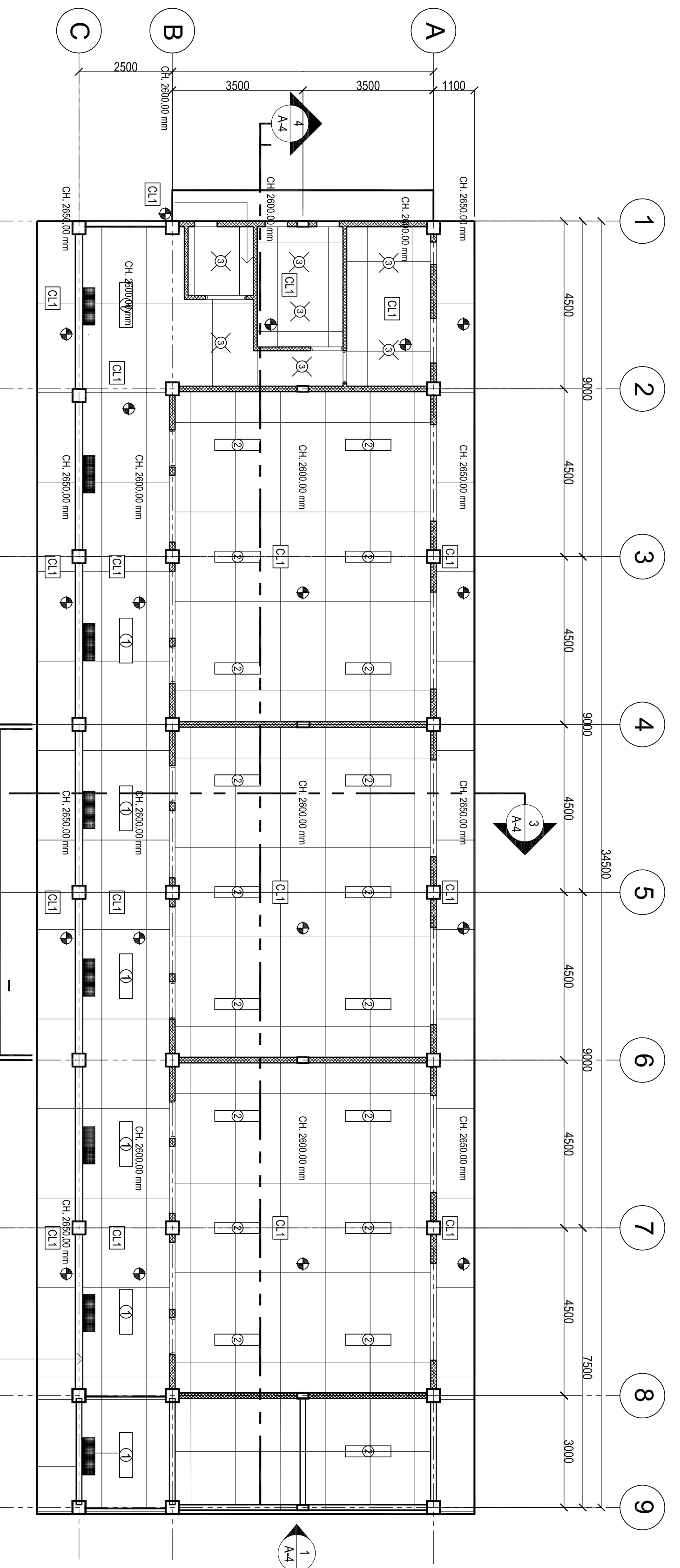
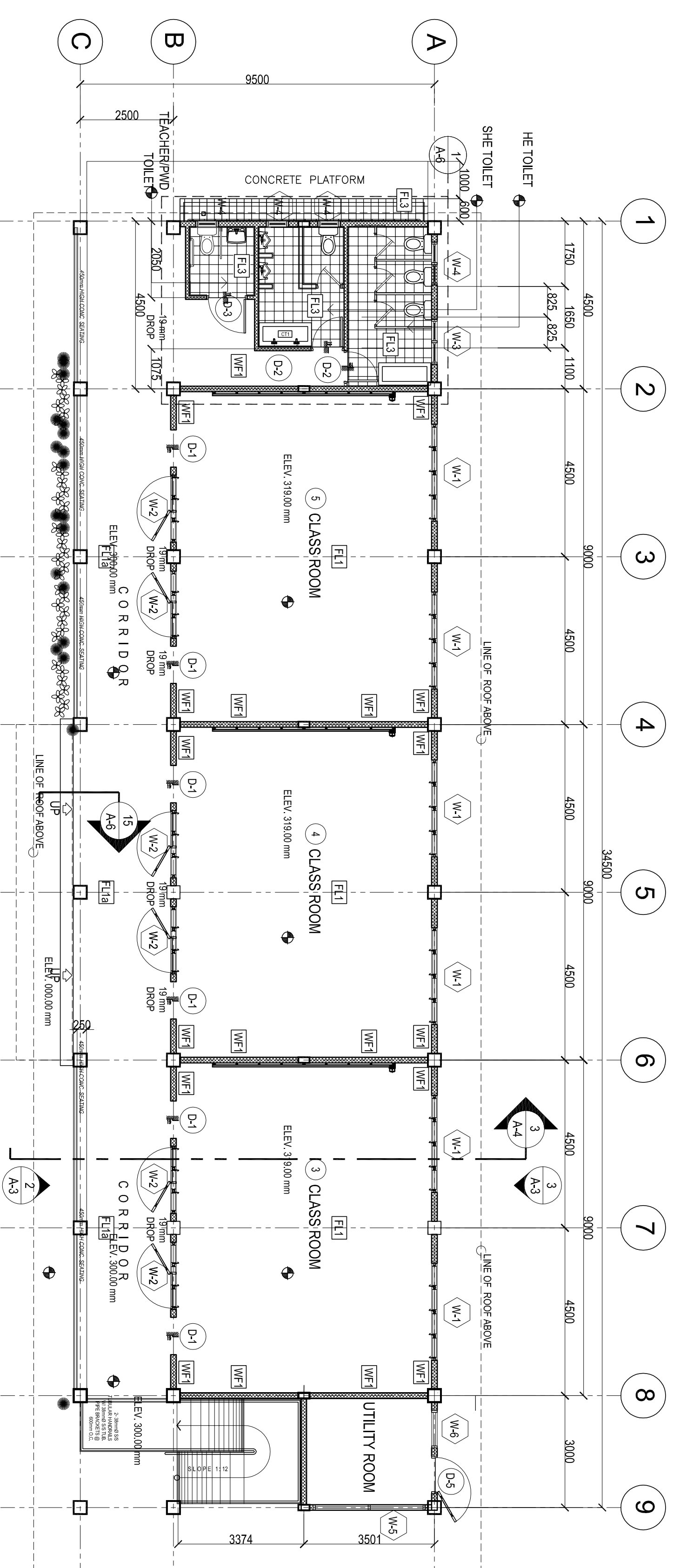


SCHEDULE OF FINISHES	
FLOOR FINISHES	
FL1	PLAIN CEMENT W/ FLOOR HARDENER, SMOOTH FINISH
FL1a	NON-SKID PLAIN CEMENT FINISH
FL2	NON-SKID PLAIN CEMENT FINISH W/ 12mm GROOVE @ EVERY 100mm O.C.
FL3	300mmX300mm VITRIFIED UNGLAZED FLOOR TILES
WALL FINISHES	
WF1	100mm/150mm THK. CHB INTERIOR WALL W/ PLAIN CEMENT PLASTER PAINTED FINISH (SUBMIT COLOR SCHEMES FOR APPROVAL)
CEILING FINISHES	
CL1	6MM THK. ORDINARY PLYWOOD CEILING ON 50MM X 50MM CEILING JOIST @ 600MM O.C. BOTHWAYS (PAINTED FINISH)



1 REFLECTED CEILING PLAN
SCALE 1:100M



2 FLOOR PLAN
SCALE 2:100M

DESIGN BY :
JUNELSON P. CULLADO
C/O OPERATOR
EPD-DepED

ARCHITECT :
JET RAYMOND S. ALABASO
ARCHITECT III
EPD-DepED

RECOMMENDING APPROVAL :
LUIS G. PURSIMA, JR.
ASST. CHIEF, EPD-AS
DepED

RECOMMENDING APPROVAL :
ANNABELLE R. PANGAN
CHIEF
OFFICE OF THE CHIEF, EPD-AS

APPROVED BY :
ALAIN DEL B. PASCUA
UNDERSECRETARY FOR ADMINISTRATION

PROJECT TITLE :
MODIFIED STANDARD DEP-ED
SCHOOL BUILDING
(WITH COMMON TOILETS @ ONE SIDE)

PROJECT CODE :
OWNER :
DEPARTMENT OF EDUCATION
DepED
SHEET CONTENTS :
REFLECTED CEILING PLAN
FLOOR PLAN

SHEET NO. :
A-2
7

